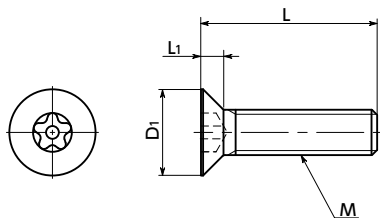




# SRGFS Five - Lobe Socket with Pin Flat Head Screws

Tamper Resistance **SUS** Stainless steel



● Material/Finish



	<b>SRGFS</b>
Main Body	SUSXM7
Strength Class	Equivalent to A2-50

- Countersunk head screws with a pin at the center of the five slots, inspired by plum blossoms. Also suitable for decorative uses.
- This prevents mounting and removing with regular tools.
- Install and remove with **SRGB** Dedicated Bits and **SRD** Dedicated Magnetic Screwdriver together.

● Application

Equipment/devices disassembly/tampering prevention  
 Theft prevention for outdoor facilities  
 Security measures  
 Safety measures

Unit : mm

Part Number <span style="color: red;">1</span>	M (Coarse)		L <span style="color: red;">2</span>							D1	L1	Bit Part No.	Screwdriver Part No.	Mass (g)	Qty per Pack
	Nominal of Thread	Pitch													
<b>SRGFS-M4</b>	M4	0.7	10	16	20					8	2.3	SRGB-4	SRD-6.35	1.03 - 1.78	10
<b>SRGFS-M5</b>	M5	0.8	10	16	25	40				10	2.8	SRGB-56	SRD-6.35	1.73 - 5.27	10
<b>SRGFS-M6</b>	M6	1	12	16	20	30	40	50		12	3.4	SRGB-56	SRD-6.35	3.04 - 9.63	10

● When purchasing less volume than one full bag, a separate handling fee is charged. For details, see the Sold Separately Service.

● Related Products

Washer for Flat Head Screw  
**SWAS-RW** is available.



**SRGB** applicable bits are available.



Dedicated magnetic screwdrivers **SRD** are available.



● Part Number Specification

**SRGFS-M5-16**



<b>1</b> Individual Sales Available / Add'l charge	<b>2</b> Cleanroom Wash & Packaging Available / Add'l charge	<b>3</b> Screw Length Adjustment Available / Add'l charge	<b>4</b> Vibration Resistant Available / Add'l charge	<b>5</b> Modification process for captive use Not Available
---	---	--	--	--