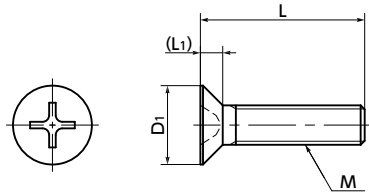


# SPC-F Plastic Cross Recessed Flat Head Machine Screws - PC

Lightweight Electrical Insulation



- PC (polycarbonate) Phillips cross recessed flat head machine screws.
- PC (polycarbonate) has the highest shock resistance of engineering plastics.
- Allowable operating temperature\*1 (min./max.): -40°C/115°C
- PC has low water absorbency and excellent weather resistance.
- For the properties and precautions for use of plastic screws, see "Properties of Plastic Screws."

### Application

Electrical and electronic equipment

### Material/Finish



SPC-F	
Main Body	PC (Polycarbonate) (Transparent)
Heat Resistance Temperature*1	115°C

\*1: This is the value for the resin material. The operating temperature of the product changes with performance conditions such as tightening torque.



Unit : mm

Part Number <sup>1</sup>	M (Coarse)		D1	L1	Cross-recessed Socket No.	Tensile Breaking Load*1 (N)	Torsional Torque*1 (N·m)	Mass (g)	Qty per Pack
	Nominal of Thread	Pitch							
SPC-M2-F	M2	0.4	4	1.2	1	107	0.055	0.018 - 0.041	50
SPC-M2-F(1000)	M2	0.4	4	1.2	1	107	0.055	0.018 - 0.041	1000
SPC-M2.6-F	M2.6	0.45	5.2	1.5	1	196	0.12	0.032 - 0.069	50
SPC-M2.6-F(1000)	M2.6	0.45	5.2	1.5	1	196	0.12	0.032 - 0.069	1000
SPC-M3-F	M3	0.5	6	1.75	2	266	0.18	0.048 - 0.19	50
SPC-M3-F(1000)	M3	0.5	6	1.75	2	266	0.18	0.048 - 0.19	1000
SPC-M4-F	M4	0.7	8	2.3	2	481	0.39	0.14 - 0.37	50
SPC-M4-F(1000)	M4	0.7	8	2.3	2	481	0.39	0.14 - 0.37	1000
SPC-M5-F	M5	0.8	10	2.8	2	797	0.8	0.23 - 0.54	50
SPC-M5-F(1000)	M5	0.8	10	2.8	2	797	0.8	0.23 - 0.3	1000
SPC-M5-F(500)	M5	0.8	10	2.8	2	797	0.8	0.36 - 0.54	500
SPC-M6-F	M6	1	12	3.4	3	1136	1.2	0.42 - 1.1	20
SPC-M6-F(500)	M6	1	12	3.4	3	1136	1.2	0.42 - 0.56	500
SPC-M6-F(250)	M6	1	12	3.4	3	1136	1.2	0.69 - 0.97	250
SPC-M6-F(200)	M6	1	12	3.4	3	1136	1.2	1.1	200
SPC-M8-F	M8	1.25	16	4.4	3	2088	3.2	0.87 - 1.9	20
SPC-M8-F(250)	M8	1.25	16	4.4	3	2088	3.2	0.87 - 1.2	250
SPC-M8-F(200)	M8	1.25	16	4.4	3	2088	3.2	1.4 - 1.7	200
SPC-M8-F(100)	M8	1.25	16	4.4	3	2088	3.2	1.9	100

\*1: Values in chart are for reference only. They are not guaranteed values. The recommended tightening torque is 50% of the torsional torque.

• When purchasing less volume than one full bag, a separate handling fee is charged. For details, see the Sold Separately Service.

Part Number	L (mm) <sup>2</sup>													
	4	5	6	8	10	12	14	15	16	18	20	25	30	35
SPC-M2-F	●	●	●	●	●									
SPC-M2-F(1000)	●	●	●	●	●									
SPC-M2.6-F	●	●	●	●	●	●								
SPC-M2.6-F(1000)	●	●	●	●	●	●								
SPC-M3-F	●	●	●	●	●	●	●	●	●	●	●	●	●	
SPC-M3-F(1000)	●	●	●	●	●	●	●	●	●	●	●	●	●	
SPC-M4-F			●	●	●	●	●	●	●	●	●	●	●	
SPC-M4-F(1000)			●	●	●	●	●	●	●	●	●	●	●	
SPC-M5-F				●	●	●		●			●	●		
SPC-M5-F(1000)				●	●	●		●			●	●		
SPC-M5-F(500)								●			●	●		
SPC-M6-F					●	●		●			●	●	●	●
SPC-M6-F(500)					●	●		●			●	●	●	●
SPC-M6-F(250)											●	●	●	
SPC-M6-F(200)												●	●	●
SPC-M8-F					●	●		●			●	●	●	
SPC-M8-F(250)					●	●		●				●	●	
SPC-M8-F(200)											●	●		
SPC-M8-F(100)													●	

### Part Number Specification

**SPC-M5-20-F**  
<sup>1</sup> <sup>2</sup> <sup>3</sup>

Individual Sales	Cleanroom Wash & Packaging	Screw Length Adjustment	Vibration Resistant	Modification process for captive use
Available / Add'l charge	Available / Add'l charge	Available / Add'l charge	Not Available	Not Available