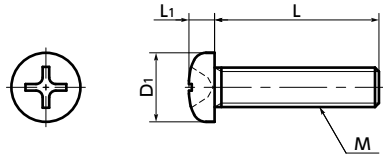


SPA-P Plastic Cross Recessed Pan Head Machine Screws - RENY

High strength Lightweight High Specific Strength



Material/Finish



SPA-P	
Main Body	RENY™*1 (50% Glass Fiber Reinforced Polyamide MXD6) (Ivory)
Heat Resistance Temperature*2	105°C

*1: RENY™ is a trademark or registered trademark of Mitsubishi Gas Chemical Company, Inc.
 *2: This is the value for the resin material. The operating temperature of the product changes with performance conditions such as tightening torque.

- RENY™ Phillips cross recessed pan head machine screws.
- RENY™ is a thermoplastic engineering plastic with excellent tensile and bending strength.
- It is highly fatigue-resistant and has excellent creep and heat insulation properties.
- While it is nearly as strong as metal, its weight is approximately 1/5 of iron.
- For the properties and precautions for use of plastic screws, see "Properties of Plastic Screws."

Application

Heat insulation and dew condensation prevention of refrigerating and freezing facilities
 Electrical and electronic equipment / Offshore instruments / Plating facilities



Unit : mm

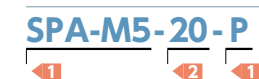
Part Number ¹	M (Coarse)		D1	L1	Cross-recessed Socket No.	Tensile Breaking Load*1 (N)	Torsional Torque*1 (N·m)	Mass (g)	Qty per Pack
	Nominal of Thread	Pitch							
SPA-M1.7-P	M1.7	0.35	2.5	0.5	0	98	0.041	0.011	50
SPA-M2-P	M2	0.4	3.5	1.3	1	350	0.101	0.028 - 0.061	50
SPA-M2-P(100)	M2	0.4	3.5	1.3	1	350	0.101	0.028 - 0.061	100
SPA-M2-P(1000)	M2	0.4	3.5	1.3	1	350	0.101	0.028 - 0.061	1000
SPA-M2.6-P	M2.6	0.45	4.5	1.7	1	611	0.22	0.07 - 0.11	50
SPA-M2.6-P(100)	M2.6	0.45	4.5	1.7	1	611	0.22	0.07 - 0.11	100
SPA-M2.6-P(1000)	M2.6	0.45	4.5	1.7	1	611	0.22	0.07 - 0.11	1000
SPA-M3-P	M3	0.5	5.5	2	2	853	0.36	0.093 - 0.35	50
SPA-M3-P(100)	M3	0.5	5.5	2	2	853	0.36	0.093 - 0.35	100
SPA-M3-P(1000)	M3	0.5	5.5	2	2	853	0.36	0.093 - 0.35	1000
SPA-M4-P	M4	0.7	7	2.6	2	1499	0.85	0.2 - 0.68	50
SPA-M4-P(100)	M4	0.7	7	2.6	2	1499	0.85	0.2 - 0.68	100
SPA-M4-P(1000)	M4	0.7	7	2.6	2	1499	0.85	0.2 - 0.52	1000
SPA-M4-P(500)	M4	0.7	7	2.6	2	1499	0.85	0.6 - 0.68	500
SPA-M5-P	M5	0.8	9	3.3	2	2407	1.65	0.47 - 1.3	20
SPA-M5-P(100)	M5	0.8	9	3.3	2	2407	1.65	0.47 - 1.3	100
SPA-M5-P(1000)	M5	0.8	9	3.3	2	2407	1.65	0.47 - 0.56	1000
SPA-M5-P(500)	M5	0.8	9	3.3	2	2407	1.65	0.66 - 0.98	500
SPA-M5-P(250)	M5	0.8	9	3.3	2	2407	1.65	1.2 - 1.3	250
SPA-M6-P	M6	1	10.5	3.9	3	3106	2.74	0.83 - 2.1	20
SPA-M6-P(100)	M6	1	10.5	3.9	3	3106	2.74	0.83 - 2.1	100
SPA-M6-P(500)	M6	1	10.5	3.9	3	3106	2.74	0.83 - 1	500
SPA-M6-P(250)	M6	1	10.5	3.9	3	3106	2.74	1.2 - 1.8	250
SPA-M8-P	M8	1.25	14	5.2	3	5335	6.22	2.3 - 3.8	10
SPA-M8-P(100)	M8	1.25	14	5.2	3	5335	6.22	2.3 - 3.8	100
SPA-M8-P(250)	M8	1.25	14	5.2	3	5335	6.22	2.3 - 2.5	250
SPA-M8-P(200)	M8	1.25	14	5.2	3	5335	6.22	2.8 - 3.2	200

*1: Values in chart are for reference only. They are not guaranteed values. The recommended tightening torque is 50% of the torsional torque.

• When purchasing less volume than one full bag, a separate handling fee is charged. For details, see the Sold Separately Service.

Part Number	L (mm) ²															
	3	4	5	6	7	8	10	12	15	16	20	25	30	35	40	
SPA-M1.7-P		●														
SPA-M2-P	●	●	●	●	●	●	●	●								
SPA-M2-P(100)	●	●	●	●	●	●	●	●								
SPA-M2-P(1000)	●	●	●	●	●	●	●	●								
SPA-M2.6-P		●	●	●		●	●	●								
SPA-M2.6-P(100)		●	●	●		●	●	●								
SPA-M2.6-P(1000)		●	●	●		●	●	●								
SPA-M3-P		●	●	●		●	●	●	●	●	●	●	●			
SPA-M3-P(100)		●	●	●		●	●	●	●	●	●	●	●			
SPA-M3-P(1000)		●	●	●		●	●	●	●	●	●	●	●			
SPA-M4-P			●	●		●	●	●	●	●	●	●	●			
SPA-M4-P(100)			●	●		●	●	●	●	●	●	●	●			
SPA-M4-P(1000)			●	●		●	●	●	●	●	●	●	●			
SPA-M4-P(500)											●	●	●			
SPA-M5-P						●	●	●	●		●	●	●	●		
SPA-M5-P(100)						●	●	●	●		●	●	●	●		
SPA-M5-P(1000)						●	●	●								
SPA-M5-P(500)									●		●	●				
SPA-M5-P(250)											●	●	●	●		
SPA-M6-P									●	●	●	●	●	●	●	
SPA-M6-P(100)									●	●	●	●	●	●	●	
SPA-M6-P(500)									●	●	●					
SPA-M6-P(250)											●	●	●	●		
SPA-M8-P									●	●		●	●	●	●	
SPA-M8-P(100)									●	●		●	●	●	●	
SPA-M8-P(250)									●	●						
SPA-M8-P(200)											●	●				

Part Number Specification



Individual Sales	Cleanroom Wash & Packaging	Screw Length Adjustment	Vibration Resistant	Modification process for captive use
Available / Add'l charge	Available / Add'l charge	Not Available	Not Available	Not Available