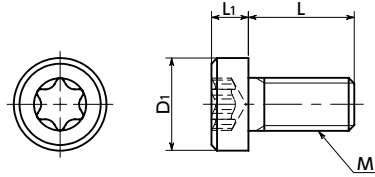


SPE-LH Plastic Low Profile Hexalobular Socket Head Screws - PEEK

Protrusion
 Heat-resistance
 Chemical-proof
 Electrical Insulation



● Material/Finish



SPE-LH	
Main Body	PEEK (Polyether Ether Ketone) (Light Brown)
Heat Resistance Temperature*1	260°C

*1: This is the value for the resin material. The operating temperature of the product changes with performance conditions such as tightening torque.

Precautions for Use

Because a cumulative pitch difference is created when PEEK screws are manufactured, use these screws with nuts. If a nut is not used, use a 20 mm or less fit with female thread.

- PEEK low profile cap screws.
- PEEK is a thermoplastic super engineering plastic superior in physical and chemical properties.
- Excellent chemical resistance. It remains almost unaffected by chemicals other than concentrated sulfuric acid, concentrated nitric acid, and concentrated hydrofluoric acid.
- With excellent heat resistance and water resistance, it retains strength at high temperatures.
- It features outstanding resistance to wear, shock, and fatigue.
- It also has high flame retardance which clears the UL 94 V-0 standard.
- The recess has a hexalobular*1 shape that can withstand high tightening torque.
- Install and remove with **SKX** Dedicated Wrench or **SKXB** Dedicated Bit and **SRD** Dedicated Magnetic Screwdriver together.
- Use the **SKX-N** hexalobular wrench for extremely limited access spaces for mounting and removing in tight spaces.
- For the properties and precautions for use of plastic screws, see "Properties of Plastic Screws."

*1: The hexalobular shape is prescribed by JIS B 1015: 2008(ISO 10664: 2005)"Hexalobular internal driving feature for bolts and screws".

● Application

FPD production equipment / Semiconductor devices / Printed circuit board etching devices / Metallic surface treatment equipment and facilities / Chemical plants / Transformers / Electrical and electronic equipment / Hot water pumps / Chemical pumps

Unit : mm

Part Number	M (Coarse)		L	D1	L1	Applicable Wrench	Hexalobular Socket No.	Tensile Breaking Load*1 (N)	Torsional Torque*1 (N·m)	Mass (g)	Qty per Pack
	Nominal of Thread	Pitch									
SPE-M3-LH	M3	0.5	6 8 10 12 16 20	5.5	2.4	SKX-10	10	406	0.21	0.11 - 0.2	20
SPE-M3-LH(100)	M3	0.5	6 8 10 12 16 20	5.5	2.4	SKX-10	10	406	0.21	0.11 - 0.2	100
SPE-M4-LH	M4	0.7	6 8 10 12 16 20 25	7	3.1	SKX-20	20	760	0.5	0.2 - 0.41	20
SPE-M4-LH(100)	M4	0.7	6 8 10 12 16 20 25	7	3.1	SKX-20	20	760	0.5	0.2 - 0.41	100
SPE-M5-LH	M5	0.8	6 8 10 12 16 20 25 30	8.5	3.65	SKX-25	25	1277	0.95	0.34 - 0.8	20
SPE-M5-LH(100)	M5	0.8	6 8 10 12 16 20 25 30	8.5	3.65	SKX-25	25	1277	0.95	0.34 - 0.8	100
SPE-M6-LH	M6	1	10 12 16 20 25 30 40	10	4.4	SKX-30	30	1747	1.65	0.63 - 1.45	10
SPE-M6-LH(100)	M6	1	10 12 16 20 25 30 40	10	4.4	SKX-30	30	1747	1.65	0.63 - 1.45	100

*1: Values in chart are for reference only. They are not guaranteed values. The recommended tightening torque is 50% of the torsional torque.

● When purchasing less volume than one full bag, a separate handling fee is charged. For details, see the Sold Separately Service.



● Related Products

PEEK hex nuts and washers **SPE-N** **SPE-W** are available.



SKX Hexalobular Wrench



SKX-N Hexalobular Wrench for Extremely Limited Access Spaces



SKXB Hexalobular Short Bit



SRD Magnet Screwdriver



● Part Number Specification

SPE-M5-30-LH



Individual Sales	Cleanroom Wash & Packaging	Screw Length Adjustment	Vibration Resistant	Modification process for captive use
Available / Add'l charge	Available / Add'l charge	Available / Add'l charge	Not Available	Available / Add'l charge