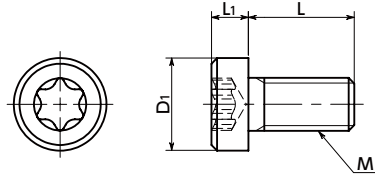


SPA-LH Plastic Low Profile Hexalobular Socket Head Screws - RENY

Protrusion High strength Lightweight High Specific Strength



Material/Finish



	SPA-LH
Main Body	RENY™*1 (50% Glass Fiber Reinforced Polyamide MXD6) (Black)
Heat Resistance Temperature*2	105°C

*1: RENY™ is a trademark or registered trademark of Mitsubishi Gas Chemical Company, Inc.

*2: This is the value for the resin material. The operating temperature of the product changes with performance conditions such as tightening torque.

- RENY™ low profile cap screws.
- RENY™ is a thermoplastic engineering plastic with excellent tensile and bending strength.
- It is highly fatigue-resistant and has excellent creep and heat insulation properties.
- While it is nearly as strong as metal, its weight is approximately 1/5 of iron.
- The recess has a hexalobular*1 shape that can withstand high tightening torque.
- Install and remove with **SKX** Dedicated Wrench or **SKXB** Dedicated Bit and **SRD** Dedicated Magnetic Screwdriver together.
- Use the **SKX-N** hexalobular wrench for extremely limited access spaces for mounting and removing in tight spaces.
- For the properties and precautions for use of plastic screws, see "Properties of Plastic Screws."

*1: The hexalobular shape is prescribed by JIS B 1015: 2008(ISO 10664: 2005)"Hexalobular internal driving feature for bolts and screws".

Application

Heat insulation and dew condensation prevention of refrigerating and freezing facilities
Electrical and electronic equipment / Offshore instruments / Plating facilities



Part Number	M (Coarse)		L								D1	L1	Applicable Wrench	Hexalobular Socket No.	Tensile Breaking Load*1 (N)	Torsional Torque*1 (N·m)	Mass (g)	Qty per Pack	
	Nominal of Thread	Pitch	6	8	10	12	16	20	25	30									40
SPA-M3-LH	M3	0.5	6	8	10	12	16	20				5.5	2.4	SKX-10	10	884	0.35	0.13 - 0.25	20
SPA-M3-LH(100)	M3	0.5	6	8	10	12	16	20				5.5	2.4	SKX-10	10	884	0.35	0.13 - 0.25	100
SPA-M3-LH(1000)	M3	0.5	6	8	10	12	16	20				5.5	2.4	SKX-10	10	884	0.35	0.13 - 0.25	1000
SPA-M4-LH	M4	0.7	6	8	10	12	16	20	25			7	3.1	SKX-20	20	1340	0.84	0.24 - 0.53	20
SPA-M4-LH(100)	M4	0.7	6	8	10	12	16	20	25			7	3.1	SKX-20	20	1340	0.84	0.24 - 0.53	100
SPA-M4-LH(1000)	M4	0.7	6	8	10	12	16					7	3.1	SKX-20	20	1340	0.84	0.24 - 0.39	1000
SPA-M4-LH(500)	M4	0.7						20	25			7	3.1	SKX-20	20	1340	0.84	0.45 - 0.53	500
SPA-M5-LH	M5	0.8	6	8	10	12	16	20	25	30		8.5	3.65	SKX-25	25	2102	1.38	0.42 - 1.02	20
SPA-M5-LH(100)	M5	0.8	6	8	10	12	16	20	25	30		8.5	3.65	SKX-25	25	2102	1.38	0.42 - 1.02	100
SPA-M5-LH(500)	M5	0.8	6	8	10	12	16	20				8.5	3.65	SKX-25	25	2102	1.38	0.42 - 0.77	500
SPA-M5-LH(250)	M5	0.8							25	30		8.5	3.65	SKX-25	25	2102	1.38	0.89 - 1.02	250
SPA-M6-LH	M6	1			10	12	16	20	25	30	40	10	4.4	SKX-30	30	2651	2.19	0.79 - 1.85	10
SPA-M6-LH(100)	M6	1			10	12	16	20	25	30	40	10	4.4	SKX-30	30	2651	2.19	0.79 - 1.85	100
SPA-M6-LH(500)	M6	1			10	12	16					10	4.4	SKX-30	30	2651	2.19	0.79 - 1.0	500
SPA-M6-LH(250)	M6	1						20	25			10	4.4	SKX-30	30	2651	2.19	1.11 - 1.33	250
SPA-M6-LH(200)	M6	1								30	10	4.4	SKX-30	30	2651	2.19	1.48	200	

*1: Values in chart are for reference only. They are not guaranteed values. The recommended tightening torque is 50% of the torsional torque.

• When purchasing less volume than one full bag, a separate handling fee is charged. For details, see the Sold Separately Service.

Individual Sales	Cleanroom Wash & Packaging	Screw Length Adjustment	Vibration Resistant	Modification process for captive use
Available / Add'l charge	Available / Add'l charge	Not Available	Not Available	Not Available

Related Products

RENY™ hex nuts and washers **SPA-N** **SPA-W** are available.



SKX Hexalobular Wrench



SKX-N Hexalobular Wrench for Extremely Limited Access Spaces



SKXB Hexalobular Short Bit



SRD Magnet Screwdriver



Part Number Specification

SPA-M5-30-LH

