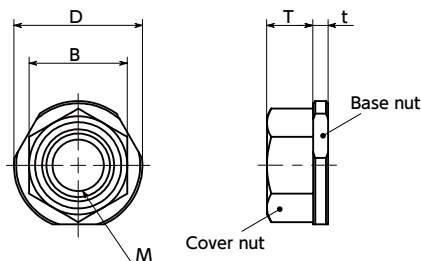
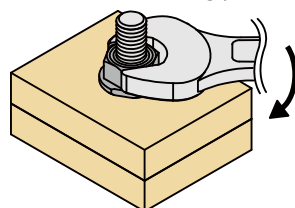


SHNRS Theft Prevention Nuts Additional Size Patented

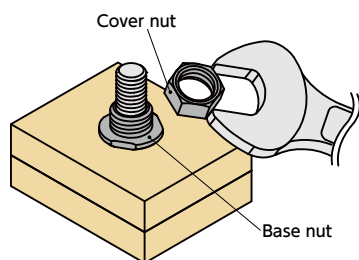
WEB CAD Download SUS Stainless steel Tamper Resistance



- Theft prevention nuts mountable with commercially available tools. Use of the same tool all along reduces mounting processes.



- For removal, the dedicated removal tool **SKW** is required. Only cover nuts can be removed with commercially available tools. The base nut shape makes removal with wrenches or pliers difficult.



- Theft prevention nuts unique to the customer, with distinct base nut shapes, can also be manufactured.

Application

Theft prevention for outdoor facilities / Devices disassembly prevention/tampering prevention / Security measures / Safety measures

Unit : mm

Part Number	M			B	D	T	t	Dedicated Removal Tool	Mass (g)	Qty per Pack
	Nominal of Thread	Pitch								
SHNRS-M6	M6	1	Coarse	10	13.5	5	1.8	SKW-6	3.8	1
SHNRS-M8	M8	1.25	Coarse	13	17	6.1	2	SKW-8	7	1
SHNRS-M10	M10	1.5	Coarse	17	21.6	8.4	2.2	SKW-10	15.3	1
SHNRS-M10-P1.25	M10	1.25	Fine	17	21.6	8.4	2.2	SKW-10	15.3	1
SHNRS-M12	M12	1.75	Coarse	19	24	9	2.5	SKW-12	20	1
SHNRS-M16	M16	2	Coarse	24	30	13	3.3	SKW-16	43	1

Disclaimer

This product offers improved theft prevention compared to ordinary hex nuts, and does not guarantee total theft prevention.

Therefore, please note in advance that we are not liable for any damages or costs incurred due to this product.

Individual Sales → P.0000	Cleanroom Wash & Packaging → P.0000	Screw Length Adjustment → P.0000	Vibration Resistant → P.0000	Modification process for captive use → P.0000
1 pc. in 1 bag	Not Available	Not Available	Not Available	Not Available

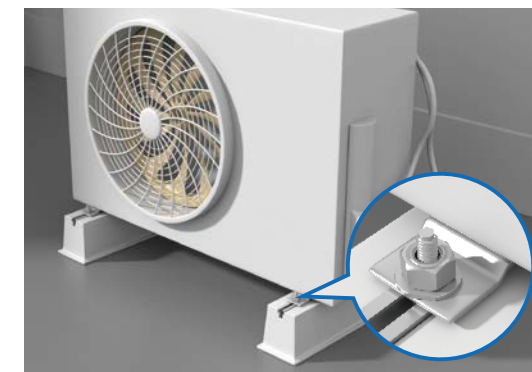
Usage example

Made of SUS304 and resistant to rust, it is well suited to theft prevention for outdoor structures like truck batteries or outdoor air conditioners.



Prevention of truck battery theft

* Some truck battery fastening screws have fine screw pitch. See the dimension table for screw pitch details.

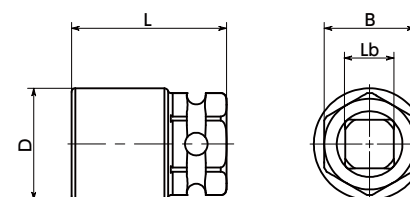


Prevention of outside AC unit theft

SKW Dedicated removal tool

Unit : mm

Part Number	D	L	B Nominal of Width Across Flats	Lb Insertion Angle	Mass(g)	Qty per Pack
SKW-6	19	32	17	9.5	42	1
SKW-8	22	32	19	9.5	53	1
SKW-10	27	39	24	12.7	93	1
SKW-12	29.5	41	24	12.7	106	1
SKW-16	37	52	32	19	215	1



- Use in combination with a commercially available impact wrench or spanner, socket wrench, or ratchet handle.
- O-ring and pin for impact wrench are supplied.

Part number specification

SHNRS-M8

