

Bore additional modification

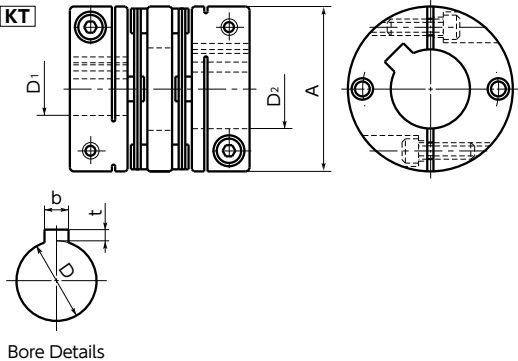
Keyway Additional Modification **KT**

- Couplings can be additionally modified with new JIS keyways based on JIS B 1301.
- The bore diameters listed in the "Keyway Additional Modification Applicable Bore List" in the table below are available for the service.
- Keyways are modified in positions determined by our references.
- Keyway additional modification is available for both single-side only and double-side.
- ⚠ As high-gain rubber and rigid types have the same bore diameter on both sides, keyway modification is available for double-side only.
- Combination with the bore additional modification **BT** is also possible.

Keyway Additional Modification Applicable Bore Diameter List

Applicable Bore Diameter D1/D2		Keyway				Key b×h Nominal Dimension	
		Reference Dimensions	Allowance JS9	Reference Dimensions	Allowance		
6	7	2	±0.0125	1.0	+0.1 0	2×2	
8	9	3	±0.0125	1.4	+0.1 0	3×3	
11	12	4	±0.0150	1.8	+0.1 0	4×4	
13	14	5	±0.0150	2.3	+0.1 0	5×5	
18	19	6	±0.0150	2.8	+0.1 0	6×6	
24	25	8	±0.0180	3.3	+0.2 0	8×7	
32	35	10	±0.0180	3.3	+0.2 0	10×8	
40	42	12	±0.0215	3.3	+0.2 0	12×8	
45	48	14	±0.0215	3.8	+0.2 0	14×9	

- The service does not cover keyway additional modification for combinations with bore diameters not listed in the table. Please contact our customer service for details.



Target Products/Fees

- Coupling category products are targeted.
- Target products are displayed with [compatibility and fees](#) at the bottom of the product page.



Type	Product Code					
High-Gain Rubber	XGT2	XGL2	XGS2	XGT	XGL	XGS
Vibration-Absorption Capable*1	XGHW					
Disk	XHW	XHW-AC*2	XHS	XBW	XBS	MDW
	MDS	MHW	MHS			
	XBWS	XBSS				
Jaw	MJT					
Cross Joint	XUT					
Oldham	MOC	MOR	MOL	MOS	MOP	
	MOM					
	MOHS					
Bellows	MFB					
	MFBS					
Serration	MSF					
Rigid*3	MRG	MLR	MRGS	MLRS		

- Please contact our customer service for the price and delivery time of **MSX**, **MST**, **MSTS**, **MWS**, **MWSS**, **MKM**, **MWBS**, **XSTS**, and **XWSS**.
- We also offer keyway additional modification not listed in the catalog. Please contact our customer service.
- *1: Keyway additional modification is only performed on the D1 side for The vibration-absorption capable disk type **XGHW**.
- *2: Keyway additional modification is only performed on the D2 side for **XHW-AC**.
- *3: Rigid Type **MRG-W**, **MRGS-W**, **MLR-V**, **MLRS-V** is not targeted.

Delivery time

- Please contact our customer service.
- Please contact our customer service regarding combination with other services.
- *1: Please contact our customer service for the delivery time of **XUT**, **MOP**, and **MOHS**.

Part Number Specification

Additional modification of single-side keyway

XHW-25C-10-KT-12

Coupling Part Number D1 Modification Symbol D2

Additional modification of double-side keyways

XHW-25C-10-KT-12-KT

Coupling Part Number D1 Modification Symbol D2 Modification Symbol

Additional modification of double-side bore + keyway

MOL-50C-17-BT-KT-19-BT-KT

Coupling Part Number D1 Modification Symbol D2 Modification Symbol

Specify the modification symbol **KT** after the bore diameter with the keyway to be modified.
Combination with the bore additional modification **BT** is also possible.