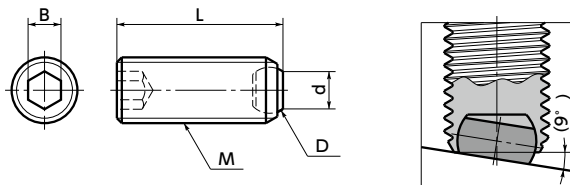


SCSS-FB Clamping Screws - Flat Ball - with Reversal Protection Mechanism



SUS Stainless steel



Material/Finish



	SCSS-FB Made of Stainless Steel
Thread Part	Equivalent to SUS304
Ball	SUS440C (Hardness: 59 - 66 HRC)

Part Number Specification

SCSS-M6-25-FB



- The ball rotates flexibly. The reversal protection mechanism always ensures secure clamping on the flat plane on the ball.
- We also produce products of special specifications, e.g. nominal diameter of thread, length and surface treatment. Please feel free to contact our customer service.

Unit : mm

Part Number Made of Stainless Steel	M (Coarse)		L	D	d (Reference Value)	B	Mass (g)
	Nominal of Thread	Pitch					
SCSS-M4-6-FB	M4	0.7	6	2.5	1.9	2	0.4
SCSS-M4-10-FB	M4	0.7	10	2.5	1.9	2	0.7
SCSS-M4-16-FB	M4	0.7	16	2.5	1.9	2	1
SCSS-M5-8-FB	M5	0.8	8	3	2.4	2.5	0.8
SCSS-M5-12-FB	M5	0.8	12	3	2.4	2.5	1.3
SCSS-M5-20-FB	M5	0.8	20	3	2.4	2.5	2.3
SCSS-M6-10-FB	M6	1	10	4	3.1	3	1.5
SCSS-M6-16-FB	M6	1	16	4	3.1	3	2.5
SCSS-M6-20-FB	M6	1	20	4	3.1	3	3.4
SCSS-M6-25-FB	M6	1	25	4	3.1	3	4
SCSS-M8-10-FB	M8	1.25	10	5.56	4.6	4	2.5
SCSS-M8-12-FB	M8	1.25	12	5.56	4.6	4	3.2
SCSS-M8-20-FB	M8	1.25	20	5.56	4.6	4	5.7
SCSS-M8-25-FB	M8	1.25	25	5.56	4.6	4	7.7
SCSS-M8-30-FB	M8	1.25	30	5.56	4.6	4	9
SCSS-M10-12-FB	M10	1.5	12	7.14	6.1	5	5
SCSS-M10-16-FB	M10	1.5	16	7.14	6.1	5	7
SCSS-M10-20-FB	M10	1.5	20	7.14	6.1	5	9.5
SCSS-M10-25-FB	M10	1.5	25	7.14	6.1	5	11
SCSS-M10-35-FB	M10	1.5	35	7.14	6.1	5	16
SCSS-M12-16-FB	M12	1.75	16	7.94	7.3	6	10
SCSS-M12-20-FB	M12	1.75	20	7.94	7.3	6	12.5
SCSS-M12-30-FB	M12	1.75	30	7.94	7.3	6	20
SCSS-M12-40-FB	M12	1.75	40	7.94	7.3	6	28
SCSS-M16-20-FB	M16	2	20	11.91	10.7	8	22
SCSS-M16-25-FB	M16	2	25	11.91	10.7	8	28
SCSS-M16-35-FB	M16	2	35	11.91	10.7	8	41
SCSS-M16-50-FB	M16	2	50	11.91	10.7	8	48

• **SCSS-M8-10-FB** **SCSS-M10-12-FB** **SCSS-M12-16-FB** **SCSS-M16-20-FB** have a shallow hex socket hole depth.

Cleanroom Wash & Packaging Please feel free to contact us	Screw Combination Available / Add'l charge	Screw Length Adjustment Not Available	Vibration Resistant Available / Add'l charge
--	---	--	---