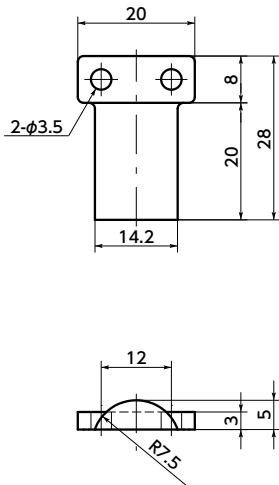
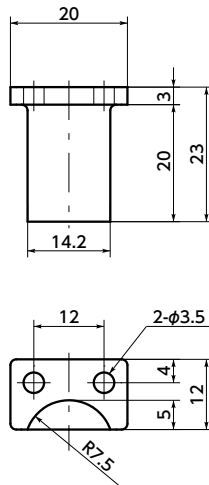


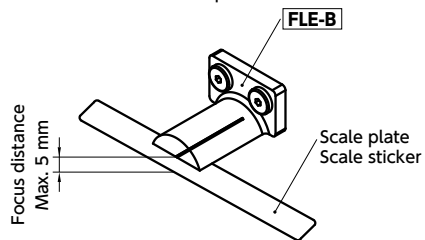
FLE-A



FLE-B



- Dedicated lens for the Scale Plate **FSP** (→ P.xxxx) and the Scale Sticker **FSS** **FST** (→ P.xxxx). It will make a scale reading easier.
- You can choose the Point Lens from the following two types of mounting methods according to your application.
 - FLE-A** — Front mounting
 - FLE-B** — Side mounting
- It is useful for displaying the home position of the actuator.
- Socket Head Cap Screw/Special Low Head made of stainless steel **SSH5-M3-10** (→ P.xxxx) for mounting is provided.
- Focus distance: Up to 5 mm



- Material/Finish RoHS2 Compliant

	FLE
Main body	Acrylic (transparent)
Thread	SUSXM7 (Equivalent to SUS304)

Part Number	Mass (g)
FLE-28-20-A	1.7
FLE-23-20-B	1.5

- Usage example
Use the Point Lens in combination with the Scale Plate **FSP** or the Scale Sticker **FSS** **FST**.

FSP → P.xxxx



FSS **FST** → P.xxxx



- Part number specification

FLE-28-20-A



Scale Plate / Scale sticker Length Adjustment → P.xxxx

Not Available