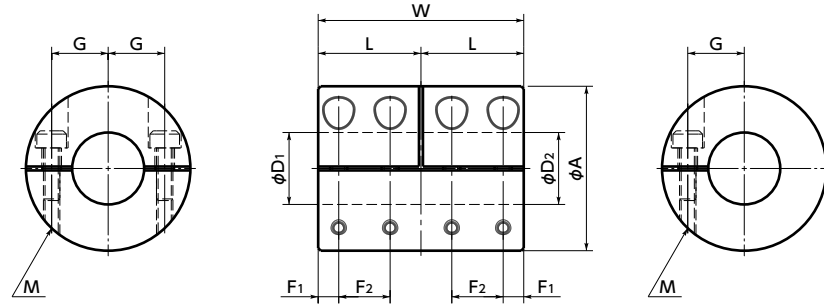


# MLR-V/MLRS-V Rigid Couplings - Semi-split Type

[WEB Selection Tool](#)
[WEB CAD Download](#)
[Zero Backlash](#)
[High Rigidity](#)
[SUS Stainless steel](#)

**MLR-V** Made of aluminum alloy  
**MLRS-V** Made of all stainless steel



## Dimensions

Unit : mm

Part Number <sup>1</sup>	A	L	W	F1	F2	G	M	Screw Tightening Torque (N·m)	Standard Bore Diameter D1-D2 <sup>2</sup>
<b>MLR-16V</b>	16	11	22	2.5	5.5	5	M2	0.5	6 - 6
<b>MLR-20V</b>	20	12	24	2.5	6	7	M2	0.5	8 - 8
<b>MLR-25V</b>	25	18	36	4.5	9	9	M2.5	1	10 - 10    12 - 12
<b>MLR-32V</b>	32	20	40	4	10	11	M3	1.5	14 - 14    15 - 15
<b>MLRS-16V</b>	16	11	22	2.5	5.5	5	M2	0.5	6 - 6
<b>MLRS-20V</b>	20	12	24	2.5	6	7	M2	0.5	8 - 8
<b>MLRS-25V</b>	25	18	36	4.5	9	9	M2.5	1	10 - 10    12 - 12
<b>MLRS-32V</b>	32	20	40	4	10	11	M3	1.5	14 - 14    15 - 15

- All products are provided with hex socket head cap screw.
- Recommended tolerance for shaft diameters is h6 and h7.
- In case of mounting on D-cut shaft, be careful about the position of the D-cut surface of the shaft. → P.xxxx

## Performance

Part Number	Max. Bore Diameter (mm)	Rated Torque *1 (N·m)	Max. Rotational Frequency (min <sup>-1</sup> )	Moment of Inertia *2 (kg·m <sup>2</sup> )	Mass *2 (g)
<b>MLR-16V</b>	6	1	39000	3.5×10 <sup>-7</sup>	10
<b>MLR-20V</b>	8	2.5	31000	9.5×10 <sup>-7</sup>	18
<b>MLR-25V</b>	12	4.5	25000	3.4×10 <sup>-6</sup>	38
<b>MLR-32V</b>	15	10	19000	1.0×10 <sup>-5</sup>	70
<b>MLRS-16V</b>	6	0.3	39000	9.1×10 <sup>-7</sup>	25
<b>MLRS-20V</b>	8	0.5	31000	2.6×10 <sup>-6</sup>	45
<b>MLRS-25V</b>	12	1	25000	9.3×10 <sup>-6</sup>	100
<b>MLRS-32V</b>	15	2	19000	2.8×10 <sup>-5</sup>	180

- \*1 : Correction of rated torque due to load fluctuation is not required.
- \*2 : These are values with max. bore diameter.

[Additional Keyway at Shaft Hole → P.xxxx](#)
[Cleanroom Wash & Packaging → P.xxxx](#)
[SUS Change to Stainless Steel Screw → P.xxxx](#)

Please feel free to contact us    Please feel free to contact us    Please feel free to contact us

- Part number specification

**MLRS-20V - 8-8**

