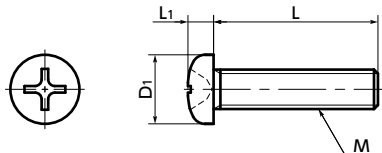


SPC-P Plastic Screw - Cross Recessed Pan Head Machine Screws - PC



● Material/Finish



	SPC-P
Main body	PC (Polycarbonate) (Transparent)*1
Heat Resistance Temperature*2	115°C

- *1: **SPC-M1.7-3-P** | **SPC-M1.7-4-P** are black.
- *2: This is the value for the plastic material. The maximum operating temperature of the product changes with performance conditions such as tightening torque.

- PC (polycarbonate) has the highest shock resistance of engineering plastics.
- Max. Operating Temperature*2 (min./max.): -40/115°C
- PC has low water absorbency and excellent weather resistance.
- The properties and precautions of plastic screws
→ P.xxxx
- Application

Electrical and electronic equipment and automobiles

Unit : mm

Part Number	M (Coarse)		L ◀ 2																D1	L1	Cross-recessed Socket Number	Tension*1 Rupture Load (N)	Torsional*1 Torque (N·m)	Mass (g)	Qty per pack
	Nominal of Thread ◀ 1	Pitch	3	4	5	6	8	10	12	15	20	25	30	35	40	40	14	5.2							
SPC-M1.7-P	M1.7	0.35	3	4													2.5	0.5	0	51	0.022	0.0066 - 0.0085	50		
SPC-M2-P	M2	0.4	3	4	5	6	8	10	12								3.5	1.3	1	107	0.055	0.02 - 0.053	50		
SPC-M2.6-P	M2.6	0.45	3	4	5	6	8	10	12	15							4.5	1.7	1	196	0.12	0.052 - 0.1	50		
SPC-M3-P	M3	0.5		4	5	6	8	10	12	15	20	25	30				5.5	2	2	266	0.18	0.075 - 0.26	50		
SPC-M4-P	M4	0.7			5	6	8	10	12	15	20	25	30	40			7	2.6	2	481	0.39	0.16 - 0.62	50		
SPC-M5-P	M5	0.8				6	8	10	12	15	20	25	30	35	40		9	3.3	2	797	0.8	0.36 - 0.91	50		
SPC-M6-P	M6	1						10	12	15	20	25	30	35	40	10.5	3.9	3	1136	1.2	0.6 - 1.6	20			
SPC-M8-P	M8	1.25								12	15	20	25	30	40	14	5.2	3	2088	3.2	1.7 - 3.1	20			

- *1: Values in chart are for reference only. They are not guaranteed values. The recommendation torque is 50% of the torsional torque.
- M1.7 is black.
- When purchasing less volume than one full bag, a separate handling fee is charged. For details, see the Sold Separately Service.

● Part number specification

SPC-M5-20-P

Product Code	◀ 1	◀ 2	Product Code
--------------	------------------------------------	------------------------------------	--------------

Individual Sales → P.xxxx	Cleanroom Wash & Packaging → P.xxxx	Screw Length Adjustment → P.xxxx	Vibration Resistant → P.xxxx	Modification process for captive use → P.xxxx
Available / Add'l charge	Available / Add'l charge	Available / Add'l charge	Not Available	Not Available