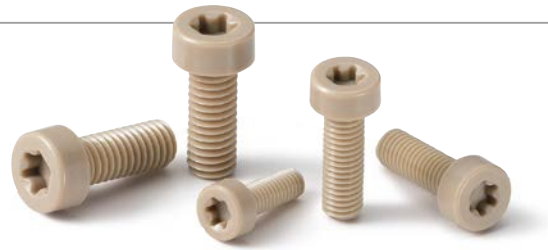
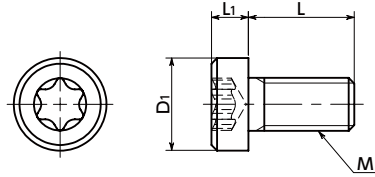


SPE-LH Plastic Screw PEEK / Hexalobular Socket Head Cap Screw / Low Head NEW

[WEB Selection Tool](#)
[WEB CAD Download](#)
[Protrusion](#)
[Heat-resistance](#)
[Chemical-proof](#)



● Material/Finish

RoHS2 Compliant

	SPE-LH
Main Body	PEEK (Polyether Ether Ketone) (Light Brown)
Heat Resistance Temperature*1	260°C

*1 : This is the value for the resin material. The operating temperature of the product changes with performance conditions such as tightening torque.

● Application

FPD production equipment / Semiconductor devices / Printed circuit board etching devices / Metallic surface treatment equipment and facilities / Chemical plants / Transformers / Electrical and electronic equipment / Hot water pumps / Chemical pumps

Precautions for Use

Because a cumulative pitch difference is created when PEEK screws are manufactured, use these screws with nuts. If a nut is not used, use a 20 mm or less fit with female thread.

- PEEK low profile cap screw.
- PEEK is a thermoplastic super engineering plastic superior in physical and chemical properties.
- Excellent chemical resistance. It remains almost unaffected by chemicals other than concentrated sulfuric acid, concentrated nitric acid, and concentrated hydrofluoric acid.
- With excellent heat resistance and water resistance, it retains strength at high temperatures.
- It features outstanding resistance to wear, shock, and fatigue.
- It also has high flame retardance which clears the UL 94 V-0 standard.
- The recess has a hexalobular*1 shape that can withstand high tightening torque. → P.xxxx
- Install and remove with **SKX** Dedicated Wrench or **SKXB** Dedicated Bit and **SRD** Dedicated Magnetic Screwdriver together.
- Use the **SKX-N** hexalobular wrench for extremely limited access spaces for mounting and removing in tight spaces.
- The properties and precautions of plastic screws → P.xxxx

*1 : The hexalobular shape is prescribed by JIS B 1015: 2008(ISO 10664: 2005)"Hexalobular internal driving feature for bolts and screws".

Unit : mm

Part Number	M (Coarse)		L ^②								D1	L1	Applicable Wrench	Hexalobular Socket No.	Tension Rupture Load*1 (N)	Torsional Torque*1 (N·m)	Mass (g)	
	Nominal of Thread ^①	Pitch	6	8	10	12	16	20	25	30								30
SPE-M3-LH	M3	0.5	6	8	10	12	16	20				5.5	2.4	SKX-10	10	406	0.21	0.11 - 0.2
SPE-M4-LH	M4	0.7	6	8	10	12	16	20	25			7	3.1	SKX-20	20	760	0.5	0.2 - 0.41
SPE-M5-LH	M5	0.8	6	8	10	12	16	20	25	30		8.5	3.65	SKX-25	25	1277	0.95	0.34 - 0.8
SPE-M6-LH	M6	1			10	12	16	20	25	30	40	10	4.4	SKX-30	30	1747	1.65	0.63 - 1.45

*1 : Values in chart are for reference only. They are not guaranteed values. The recommended tightening torque is 50% of the torsional torque.

Part Number	per Pack Qty
SPE-M3-LH	20
SPE-M4-LH	20
SPE-M5-LH	20
SPE-M6-LH	10

● Also sold separately from 1 piece up. → P.xxxx

Individual Sales → P.xxxx	Cleanroom Wash & Packaging → P.xxxx	Screw Length Adjustment → P.xxxx	Vibration Resistant → P.xxxx	Modification process for captive use → P.xxxx
Available / Add'l charge	Available / Add'l charge	Available / Add'l charge	Not Available	Available / Add'l charge

● Related Products

PEEK hex nuts and washers **SPE-N** **SPE-W** are available. → P.xxxx



SKX Hexalobular Wrench → P.xxxx



SKX-N Hexalobular Wrench for Extremely Limited Access Spaces → P.xxxx



SKXB Hexalobular Short Bit → P.xxxx



SRD Magnet Screwdriver → P.xxxx



● Part number specification

SPE-M5-30-LH

Product Symbol ^① ^② Product Symbol

Order in number of packs.

Also sold separately from 1 piece up. → P.xxxx