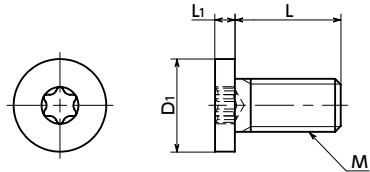


# SPA-SH Plastic Screws - Hexalobular Socket Head Cap Screw with Ultra Low Head - RENY

Protrusion High strength High Specific Strength



● Material/Finish



SPA-SH	
Main Body	RENY™ <sup>*1</sup> (50% Glass Fiber Reinforced Polyamide MXD6) (Black)
Heat Resistance Temperature*2	105°C

\*1: RENY™ is a trademark or registered trademark of Mitsubishi Gas Chemical Company, Inc.

\*2: This is the value for the resin material. The operating temperature of the product changes with performance conditions such as tightening torque.

- RENY™ special low profile cap screw. All head heights are 1.5mm or less.
- RENY™ is a thermoplastic engineering plastic with excellent tensile and bending strength.
- It is highly fatigue-resistant and has excellent creep and heat insulation properties.
- While it is nearly as strong as metal, its weight is approximately 1/5 of iron.
- The recess has a hexalobular\*1 shape that can withstand high tightening torque.
- Install and remove with **SKX** Dedicated Wrench or **SKXB** Dedicated Bit and **SRD** Dedicated Magnetic Screwdriver together.
- Use the **SKX-N** hexalobular wrench for extremely limited access spaces for mounting and removing in tight spaces.
- For the properties and precautions of plastic screws, please refer to "Properties of Plastic Screws".

\*1: The hexalobular shape is prescribed by JIS B 1015: 2008(ISO 10664: 2005)"Hexalobular internal driving feature for bolts and screws".

● Application

Electrical and electronic equipment / Insulation and dew condensation prevention for refrigerators and freezers / Aquatic applications / Electrochemical plating / Lightweight applications in automobiles / Aircrafts / Spacecrafts

Unit : mm

Part Number	M (Coarse)		L								D1	L1	Applicable Wrench	Hexalobular Socket No.	Tension Rupture Load*1 (N)	Torsional Torque*1 (N·m)	Mass (g)	per Pack Qty	
	Nominal of Thread	Pitch	6	8	10	12	16	20	25	30									40
<b>SPA-M3-SH</b>	M3	0.5	6	8	10	12	16	20				6	1.3	SKX-8	8	596	0.25	0.098 - 0.22	20
<b>SPA-M4-SH</b>	M4	0.7	6	8	10	12	16	20	25			8	1.5	SKX-10	10	1004	0.53	0.19 - 0.48	20
<b>SPA-M5-SH</b>	M5	0.8	6	8	10	12	16	20	25	30		9	1.5	SKX-15	15	1543	0.95	0.27 - 0.87	20
<b>SPA-M6-SH</b>	M6	1			10	12	16	20	25	30	40	10	1.5	SKX-20	20	1654	1.27	0.5 - 1.55	10

\*1: Values in chart are for reference only. They are not guaranteed values. The recommended tightening torque is 50% of the torsional torque.

● When purchasing less volume than one full bag, a separate handling fee is charged. For details, see the Sold Separately Service.

● Related Products

RENY™ hex nuts and washers **SPA-N** **SPA-W** are available.



**SKX** Hexalobular Wrench



**SKX-N** Hexalobular Wrench for Extremely Limited Access Spaces



**SKXB** Hexalobular Short Bit



**SRD** Magnet Screwdriver



● Part number specification

**SPA - M5 - 30 - SH**

Product Symbol **1** **2** Product Symbol

<b>1</b> Individual Sales Available / Add'l charge	Cleanroom Wash & Packaging Available / Add'l charge	Screw Length Adjustment Not Available	Vibration Resistant Not Available	Modification process for captive use Not Available
--	---	---------------------------------------	-----------------------------------	--