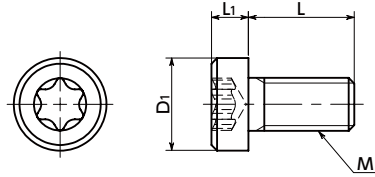


SPA-LH Plastic Screw RENY / Hexalobular Socket Head Cap Screw / Low Head NEW

WEB Selection Tool
 WEB CAD Download
 Protrusion
 High strength



● Material/Finish

RoHS2 Compliant

	SPA-LH
Main Body	RENY ^{*1} (50% Glass Fiber Reinforced Polyamide MXD6) (Black)
Heat Resistance Temperature*2	105°C

*1: RENY is a registered trademark of Mitsubishi Engineering-Plastics Corporation.

*2: This is the value for the resin material. The operating temperature of the product changes with performance conditions such as tightening torque.

- RENY low profile cap screw.
- RENY is a thermoplastic engineering plastic with excellent tensile and bending strength.
- It is highly fatigue-resistant and has excellent creep and heat insulation properties.
- While it is nearly as strong as metal, its weight is approximately 1/5 of iron.
- The recess has a hexalobular*1 shape that can withstand high tightening torque. → P.xxxx
- Install and remove with **SKX** Dedicated Wrench or **SKXB** Dedicated Bit and **SRD** Dedicated Magnetic Screwdriver together.
- Use the **SKX-N** hexalobular wrench for extremely limited access spaces for mounting and removing in tight spaces.
- The properties and precautions of plastic screws → P.xxxx

*1: The hexalobular shape is prescribed by JIS B 1015: 2008(ISO 10664: 2005)"Hexalobular internal driving feature for bolts and screws".

● Application

Electrical and electronic equipment / Insulation and dew condensation prevention for refrigerators and freezers / Aquatic applications / Electrochemical plating / Lightweight applications in automobiles / Aircrafts / Spacecrafts

Part Number	M (Coarse)		L 2								D1	L1	Applicable Wrench	Hexalobular Socket No.	Tension Rupture Load*1 (N)	Torsional Torque*1 (N·m)	Mass (g)
	Nominal of Thread 1	Pitch	6	8	10	12	16	20	25	30							
SPA-M3-LH	M3	0.5	6	8	10	12	16	20			5.5	2.4	SKX-10	10	884	0.35	0.13-0.25
SPA-M4-LH	M4	0.7	6	8	10	12	16	20	25		7	3.1	SKX-20	20	1340	0.84	0.24-0.53
SPA-M5-LH	M5	0.8	6	8	10	12	16	20	25	30	8.5	3.65	SKX-25	25	2102	1.38	0.42-1.02
SPA-M6-LH	M6	1			10	12	16	20	25	30	10	4.4	SKX-30	30	2651	2.19	0.79-1.85

*1: Values in chart are for reference only. They are not guaranteed values. The recommended tightening torque is 50% of the torsional torque.

Part Number	per Pack Qty
SPA-M3-LH	20
SPA-M4-LH	20
SPA-M5-LH	20
SPA-M6-LH	10

● Also sold separately from 1 piece up. → P.xxxx

Individual Sales → P.xxxx	Cleanroom Wash & Packaging → P.xxxx	Screw Length Adjustment → P.xxxx	Vibration Resistant → P.xxxx	Modification process for captive use → P.xxxx
Available / Add'l charge	Available / Add'l charge	Not Available	Not Available	Not Available

● Related Products

RENY hex nuts and washers **SPA-N** **SPA-W** are available.
→ P.xxxx



SKX Hexalobular Wrench
→ P.xxxx



SKX-N Hexalobular Wrench for Extremely Limited Access Spaces
→ P.xxxx



SKXB Hexalobular Short Bit
→ P.xxxx



SRD Magnet Screwdriver
→ P.xxxx



● Part number specification

SPA - M5 - 30 - LH
Product Symbol 1 2 Product Symbol

Order in number of packs.
Also sold separately from 1 piece up. → P.xxxx