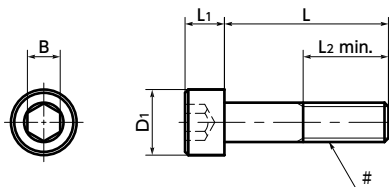


SNSS(INCH) Hex Socket Head Cap Screws - Inch Thread



WEB Selection Tool WEB CAD Download SUS Stainless steel



● Material/Finish

RoHS2 Compliant

	SNSS(INCH)
Main Body	Stainless Steel (Grade : A2)
Strength Class	A2-50



- Socket head cap screws with inch thread.
- ANSI B18.3 compliance.
- Install and remove by using **SKH(INCH)** Specialty Key. ➔ P.xxxx
- Application

Equipment and devices using inch screw specifications

Part Number	# Nominal of Thread	L											D1	L1	L2*1	B	Mass (g)		
		3/16	1/4	5/16	3/8	1/2	5/8	3/4	7/8	1	1-1/4	1-1/2						1-3/4	2
SNSS-#4-40	No.4-40UNC														0.183	0.112	Full Thread	3/32	0.51 - 1.1
SNSS-#5-40	No.5-40UNC														0.205	0.125	Full Thread	3/32	0.78 - 1.4
SNSS-#6-32	No.6-32UNC														0.226	0.138	0.75(L≥7/8)	7/64	0.98 - 3.6
SNSS-#8-32	No.8-32UNC														0.27	0.164	0.88(L≥1)	9/64	1.6 - 5.4
SNSS-#10-24	No.10-24UNC														0.312	0.19	0.88(L≥1)	5/32	2.3 - 7.2
SNSS-#10-32	No.10-32UNF														0.312	0.19	0.88(L≥1)	5/32	2.2 - 7.6
SNSS-#12-24	No.12-24UNC														0.343	0.216	1(L≥1 - 1/4)	5/32	3.4 - 7.6
SNSS-1 / 4-20	1/4-20UNC														0.375	0.25	1(L≥1 - 1/4)	3/16	4.3 - 13
SNSS-1 / 4-28	1/4-28UNF														0.375	0.25	1(L≥1 - 1/4)	3/16	5.1 - 9.7
SNSS-5 / 16-18	5/16-18UNC														0.469	0.312	1.12(L≥1 - 1/4)	1/4	8.8 - 22

● All dimensions are in inches.
*1 : If the "L" value is other than the value in parentheses, the screw is full thread.

Part Number	Qty*1 per pack
SNSS-#4-40	10
SNSS-#5-40	10
SNSS-#6-32	10
SNSS-#8-32	10
SNSS-#10-24	10
SNSS-#10-32	10
SNSS-#12-24	10
SNSS-1 / 4-20	10
SNSS-1 / 4-28	10
SNSS-5 / 16-18	10
SNSS-3 / 8-16	10

*1 : Also sold separately from 1 piece up. ➔ P.xxxx

● Part number specification

SNSS-#4-40 - 1/4



Order in number of packs.
The minimum order is 1 piece. ➔ P.xxxx

Individual Sales ➔ P.xxxx	Cleanroom Wash & Packaging ➔ P.xxxx	Screw Length Adjustment ➔ P.xxxx	Vibration Resistant ➔ P.xxxx	Modification process for captive use ➔ P.xxxx
Available / Add'l charge	Available / Add'l charge	Available / Add'l charge	Available / Add'l charge	Available / Add'l charge