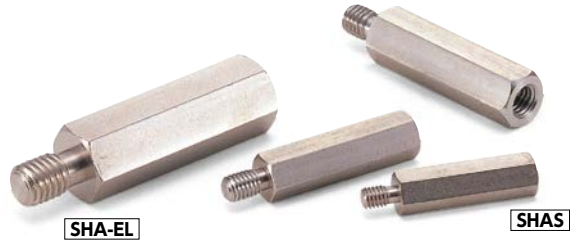
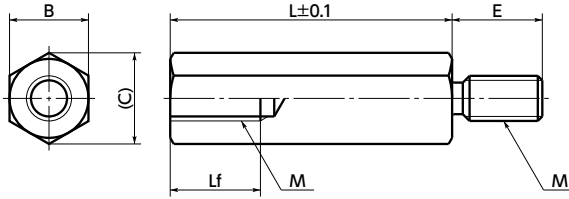


SHA-EL / SHAS Hexagon Post



SUS Stainless steel



- Hexagon post for one side is male screw and the other side is female screw.
- Two or more hexagon posts can be used in combination.
- Material/Finish **◀1**



	SHA-EL Made of Steel	SHAS Made of Stainless Steel
Main body	SUM22L Electroless Nickel Plating	SUS304

Dimensions

Unit : mm

Part Number Steel	Part Number Stainless steel	M (Coarse)		B	C	E	Lf	Mass (g)
		Nominal of Thread ◀2	Pitch					
SHA-M3-EL	SHAS-M3	M3	0.5	6	6.9	4.5	6	3.5 - 9.6
SHA-M4-EL	SHAS-M4	M4	0.7	7	8.1	6	8	6.4 - 26
SHA-M5-EL	SHAS-M5	M5	0.8	8	9.2	7.5	10	8.2 - 42
SHA-M6-EL	SHAS-M6	M6	1	10	11.5	9	12	16 - 100
SHA-M8-EL	SHAS-M8	M8	1.25	13	15	12	16	38 - 170

SHA-EL Made of Steel SHAS Made of Stainless Steel

Part Number	L (mm) ◀3														
	15	20	25	30	35	40	45	50	60	70	80	90	100	120	150
SHA-M3-EL	●	●	●	●	●	●									
SHA-M4-EL		●	●	●	●	●	●	●	●	●	●				
SHA-M5-EL		●	●	●	●	●	●	●	●	●	●	●	●		
SHA-M6-EL			●	●	●	●	●	●	●	●	●	●	●	●	●
SHA-M8-EL					●	●	●	●	●	●	●	●	●	●	●
SHAS-M3	●	●	●	●	●	●									
SHAS-M4		●	●	●	●	●	●	●	●	●	●				
SHAS-M5		●	●	●	●	●	●	●	●	●	●	●	●		
SHAS-M6			●	●	●	●	●	●	●	●	●	●	●	●	●
SHAS-M8					●	●	●	●	●	●	●	●	●	●	●

- Part number specification

SHA-M5-80-EL



Cleanroom Wash & Packaging → P.xxxx	Screw Length Adjustment → P.xxxx	Vibration Resistant → P.xxxx	Laser Marking → P.xxxx
Please feel free to contact us	Available / Add'l charge	Available / Add'l charge	Available / Add'l charge