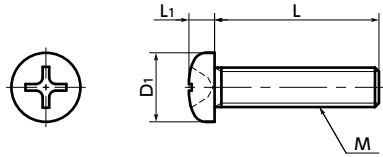


SPE-P Plastic Screws - Cross Recessed Pan Head Machine Screws - PEEK *Additional Size*

WEB Selection Tool | WEB CAD Download | Chemical-proof



● Material/Finish

RoHS2 Compliant

SPE-P	
Main body	PEEK (Polyether Ether Ketone) (Light Brown)
Heat Resistance Temperature*1	260°C

*1: This is the value for the plastic material. The maximum operating temperature of the product changes with performance conditions such as tightening torque.

⚠ Precautions for Use

Because a cumulative pitch difference is created when PEEK screws are manufactured, use these screws with nuts. If a nut is not used, use a 20 mm or less fit with female thread.

- PEEK is a thermoplastic super-engineering plastic with excellent physical and chemical properties.
- These screws have excellent chemical resistance. They are mostly unaffected by chemicals excluding concentrate sulfuric acid, concentrate nitric acid, and concentrate hydrofluoric acid.
- These screws have excellent heat resistance, water resistance, and high heat resistance strength.
- These screws have excellent abrasion, shock, and fatigue resistance.
- They have high incombustibility that meets V-0 of UL 94.
- The properties and precautions of plastic screws → P.xxxx

● Application

FPD production equipment / Semiconductor devices / Printed circuit board etching devices / Metallic surface treatment equipment and facilities / Chemical plants / Transformers / Electrical and electronic equipment / Hot water pumps / Chemical pumps

Unit : mm

Part Number	M (Coarse)		L ◀2												D1	L1	Tension*1 Rupture Load (N)	Torsional*1 Torque (N·m)	Mass (g)			
	Nominal of Thread	Pitch	4	5	6	8	10	12	15	16	20	25	30	30						30	30	30
SPE-M1.7-P	M1.7	0.35	4															2.5	0.5	81	0.038	0.0088
SPE-M2-P	M2	0.4	4	5	6	8	10	12										3.5	1.3	165	0.071	0.023 - 0.048
SPE-M2.6-P	M2.6	0.45	4	5	6	8	10	12										4.5	1.7	291	0.15	0.044 - 0.087
SPE-M3-P	M3	0.5	4	5	6	8	10	12	15	16	20	25						5.5	2	405	0.21	0.066 - 0.22
SPE-M4-P	M4	0.7		5	6	8	10	12	15	16	20	25	30					7	2.6	738	0.47	0.15 - 0.48
SPE-M5-P	M5	0.8			6	8	10	12	15	16	20	25	30					9	3.3	1234	0.96	0.33 - 0.8
SPE-M6-P	M6	1					10	12	15		20	25	30	10.5	3.9	1749		10.5	3.9	1749	1.64	0.65 - 1.2
SPE-M8-P	M8	1.25						12	15		20	25	30	14	5.2	3261		14	5.2	3261	3.68	1.6 - 2.8

*1: Values in chart are for reference only. They are not guaranteed values. The recommendation torque is 50% of the torsional torque.

Part Number	Qty per pack*1
SPE-M1.7-P	20
SPE-M2-P	20
SPE-M2.6-P	20
SPE-M3-P	20
SPE-M4-P	20
SPE-M5-P	10
SPE-M6-P	10
SPE-M8-P	5

*1: Also sold separately from 1 piece up. → P.xxxx

Individual Sales → P.xxxx	Cleanroom Wash & Packaging → P.xxxx	Screw Length Adjustment → P.xxxx	Vibration Resistant → P.xxxx	Modification process for captive use → P.xxxx
Available / Add'l charge	Available / Add'l charge	Available / Add'l charge	Not Available	Not Available

● Related Products

SPE-N Plastic Hexagon Nut (PEEK) is available.
→ P.xxxx



PEEK cross-recessed pan head machine screws **SPE-P(INCH)** are available as inch threads.
→ P.xxxx



● Part number specification

SPE-M5-20-P

Product Code 1 2 Product Code

Order in number of packs.

Also sold separately from 1 piece up. → P.xxxx