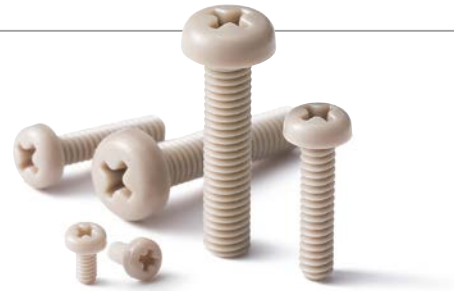
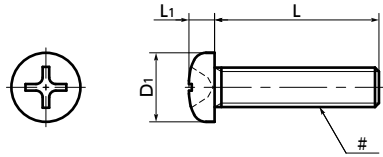


SPE-P(INCH) Plastic Screws - Cross Recessed Pan Head Machine Screws - PEEK - Inch Thread NEW

[WEB Selection Tool](#)
[WEB CAD Download](#)
[Heat-resistance](#)
[Chemical-proof](#)



● Material/Finish

RoHS2 Compliant

SPE-P(INCH)	
Main Body	PEEK / Light Brown
Heat Resistance Temperature*1	260°C

*1: This is the value for the resin material. The operating temperature of the product changes with performance conditions such as tightening torque.

Precautions for Use

Because a cumulative pitch difference is created when PEEK screws are manufactured, use these screws with nuts. If a nut is not used, use a 20 mm (approx. 0.79") or less fit with female thread.

- Inch screw type.
- PEEK is a thermoplastic super engineering plastic superior in physical and chemical properties.
- Excellent chemical resistance. It remains almost unaffected by chemicals other than concentrated sulfuric acid, concentrated nitric acid, and concentrated hydrofluoric acid.
- With excellent heat resistance and water resistance, it retains strength at high temperatures.
- It features outstanding resistance to wear, shock, and fatigue.
- It also has high flame retardance which clears the UL 94 V-0 standard.
- Plastic screw properties and precautions for use → P.xxxx

● Application

FPD production equipment / Semiconductor devices / Printed circuit board etching devices / Metallic surface treatment equipment and facilities / Chemical plants / Transformers / Electrical and electronic equipment / Hot water pumps / Chemical pumps

Unit : inch

Part Number	#Nominal of Thread	L	D1	L1	Tension Rupture Load*1 (N)	Torsional Torque*1 (N·m)	Mass (g)
SPE-#2-56-P	No.2-56UNC	1/4 3/8 3/16 5/16	0.167	0.058	181	0.1	0.036-0.048
SPE-#4-40-P	No.4-40UNC	1/4 3/8 5/16 1 1/2 3/4 5/8 7/8	0.219	0.08	306	0.19	0.083-0.156
SPE-#6-32-P	No.6-32UNC	1/4 3/8 5/16 1 1/2 3/4 5/8 7/8	0.27	0.097	459	0.33	0.11 -0.30
SPE-#8-32-P	No.8-32UNC	1/4 3/8 5/16 1 1/2 3/4 5/8 7/8	0.322	0.115	746	0.61	0.16 -0.35
SPE-#10-24-P	No.10-24UNC	3/8 1 1/2 3/4 5/8 7/8	0.373	0.133	919	0.84	0.47 -0.65
SPE-#10-32-P	No.10-32UNF	3/8 1 1/2 3/4 5/8 7/8	0.373	0.133	1090	0.95	0.59 -0.77
SPE-1 / 4-20	1/4-20UNC	3/8 1 1/2 3/4 5/8 7/8 1-1/4	0.492	0.175	1742	2.04	1.4 -1.9

*1: Values in chart are for reference only. They are not guaranteed values. The recommended tightening torque is 50% of the torsional torque.

Part Number	per Pack Qty
SPE-#2-56-P	10
SPE-#4-40-P	10
SPE-#6-32-P	10
SPE-#8-32-P	10
SPE-#10-24-P	10
SPE-#10-32-P	10
SPE-1 / 4-20	10

[Individual Sales](#) → P.xxxx
 [Cleanroom Wash & Packaging](#) → P.xxxx
 [Screw Length Adjustment](#) → P.xxxx
 [Vibration Resistant](#) → P.xxxx
 [Modification process for captive use](#) → P.xxxx

Available / Add'l charge Available / Add'l charge Available / Add'l charge Not Available Please feel free to contact us

● Related Products

PEEK cross-recessed pan head machine screws **SPE-P** are available as metric threads. → P.xxxx



PEEK hex nuts (inch thread) **SPE-N(INCH)** are available. → P.xxxx



● Part number specification

SPE-#4-40-1/4-P

Order in number of packs. The minimum order quantity is 1 piece. → P.xxxx