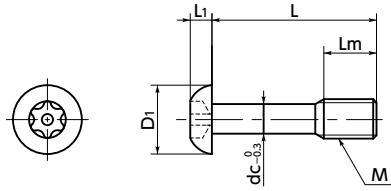


SSC-SRBS Captive Button Head Cap Bolts with Hexalobular Socket (with Pin)

WEB Selection Tool | WEB CAD Download | SUS Stainless steel | Tamper Resistance



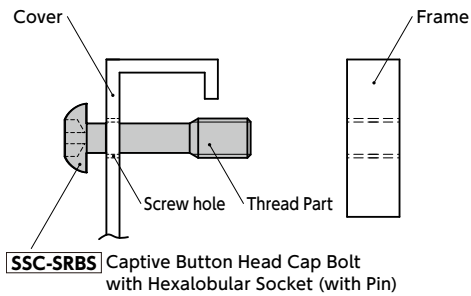
● Material/Finish

RoHS2 Compliant

SSC-SRBS	
Main Body	Equivalent to SUS304
Strength Class	Equivalent to A2-50

● Installation example

Machine a screw hole on the cover and let through the threaded part of **SSC-SRBS**. Threaded part of **SSC-SRBS** is still engaged with the screw hole on the cover even after the screw is removed from the frame, so **SSC-SRBS** never fall out of the cover.



⚠ Precautions for Use

- Screw hole inner diameter on the cover side shall be at least the dc dimension.
- The cover thickness should be 0.8 mm or above.



- Prevents fall-off and loss of the screw. They are intended to fix protective and inspection covers that are frequently installed and removed.
- Tamper resistant screw type.
- For CE Marking compatibility. → P.xxxx
- Install and remove with **SRX** Dedicated Wrench or **SRXB** Dedicated Bit and **SRD** Dedicated Magnetic Screwdriver together.
- We also produce captive screws of special specifications, e.g. dimensions, shapes, materials and surface treatment. Please contact our customer service.



● Application

Fixing of protection cover and cover for inspection / CE marking Machine tool / Food machinery / and Electronic device

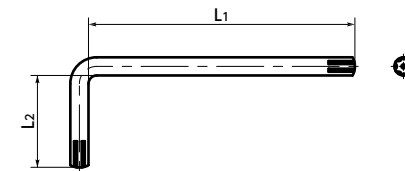
Part Number	M (Coarse)		L	Lm	D1	L1	dc	Applicable Wrench Type	Applicable Bit Type		Hexalobular Socket No.	Mass (g)			
	Nominal of Thread	Pitch							Bit	Driver					
SSC-SRBS-M3	M3	0.5	8	10	12	16	4	5.7	1.65	2.2	SRX-10	SRXB-10	SRD-6.35	10	0.57 - 0.93
SSC-SRBS-M4	M4	0.7		10	12	16	5	7.6	2.2	3	SRX-20	SRXB-20	SRD-6.35	20	1.4 - 2.2
SSC-SRBS-M5	M5	0.8			12	16	6	9.5	2.75	3.9	SRX-25	SRXB-25	SRD-6.35	25	2.3 - 4.1
SSC-SRBS-M6	M6	1			12	16	8	10.5	3.3	4.5	SRX-30	SRXB-30	SRD-6.35	30	3.6 - 6.9
SSC-SRBS-M8	M8	1.25			16	20	10	14	4.4	6.3	SRX-40	SRXB-40	SRD-6.35	40	9.1 - 18

Part Number	Qty per Pack
SSC-SRBS-M3	1
SSC-SRBS-M4	1
SSC-SRBS-M5	1
SSC-SRBS-M6	1
SSC-SRBS-M8	1

● **SRX** Dedicated Wrench

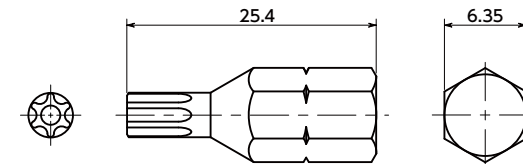
Unit : mm

Part Number	L1	L2	Mass (g)	Qty per pack
SRX-10	60	20	3.7	1
SRX-20	67	23	8.2	1
SRX-25	70	25	11	1
SRX-30	81	28	20	1
SRX-40	88	31	32	1



● **SRXB** Bit Part No.

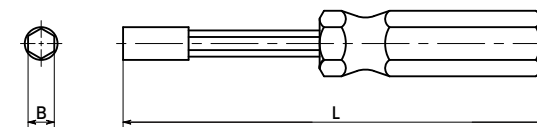
Part Number	Mass (g)	Qty per pack
SRXB-10	4.36	1
SRXB-20	4.57	1
SRXB-25	4.79	1
SRXB-30	5.50	1
SRXB-40	6.00	1



● **SRD** Dedicated magnet screwdriver

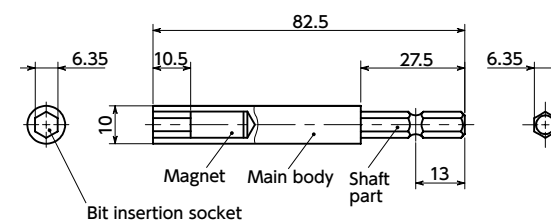
Unit : mm

Part Number	L	B	Mass (g)	Qty per pack
SRD-6.35	210	6.35	98	1



● **SKABA** Applicable Bit Adapter

Part Number	Mass (g)	Qty per pack
SKABA-80-6.35	37	1



● Part number specification

SSC-SRBS-M6-12

1 Individual Sales → P.xxxx | Cleanroom Wash & Packaging → P.xxxx | Screw Length Adjustment → P.xxxx | Vibration Resistant → P.xxxx | Modification process for captive use → P.xxxx
 1 unit in 1 bag | Available / Add'l charge | Not Available | Not Available | with Captive Processing