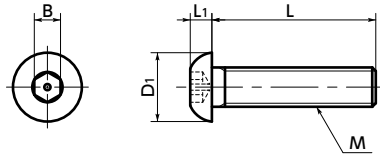


SRHS Socket Head Cap Screws with Hexalobular Socket and Pin

SUS Stainless steel Tamper Resistance



● Material/Finish



	SRHS
Main Body	Equivalent to SUS304
Strength Class	Equivalent to A2-50

- Button head cap screws with pin at the center of their socket.
- This prevents mounting and removing with regular tools.
- Install and remove with **SRH** Dedicated Wrench or **SRHB** Dedicated Bit and **SRD** Dedicated Magnetic Screwdriver together.

● Application

Equipment/devices disassembly/tampering prevention
 Theft prevention for outdoor facilities
 Security measures
 Safety measures

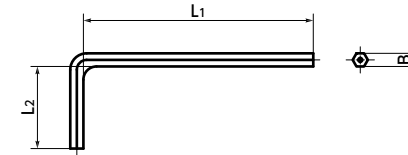
Part Number	M (Coarse)		L								D1	L1	B	Applicable Wrench Type	Applicable Bit Type		Mass (g)	Qty per Pack
	Nominal of Thread	Pitch	6	8	10	12	16	20	25	10.5					3.3	4		
SRHS-M3	M3	0.5	6	8	10	12	16			5.7	1.65	2	SRH-2	SRHB-2	SRD-6.35	0.48 - 0.93	20	
SRHS-M4	M4	0.7	6	8	10	12	16	20		7.6	2.2	2.5	SRH-2.5	SRHB-2.5	SRD-6.35	1.1 - 2.2	20	
SRHS-M5	M5	0.8		8	10	12	16	20		9.5	2.75	3	SRH-3	SRHB-3	SRD-6.35	1.8 - 3.3	20	
SRHS-M6	M6	1			10	12	16	20	25	10.5	3.3	4	SRH-4	SRHB-4	SRD-6.35	3.3 - 6.1	10	

● When purchasing less volume than one full bag, a separate handling fee is charged. For details, see the Sold Separately Service.

● **SRH** Dedicated Wrench

Unit : mm

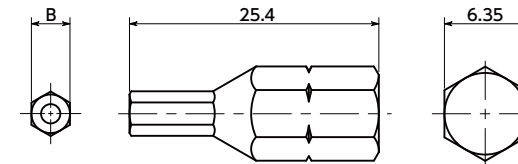
Part Number	B	L1	L2	Mass (g)
SRH-2	2	50	16	1.8
SRH-2.5	2.5	56	18	3.1
SRH-3	3	63	20	5
SRH-4	4	70	25	10



● **SRHB** Bit Part No.

Unit : mm

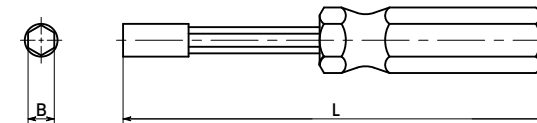
Part Number	B	Mass (g)
SRHB-2	2	4.81
SRHB-2.5	2.5	4.93
SRHB-3	3	4.85
SRHB-4	4	6.31



● **SRD** Dedicated Magnet Screwdriver

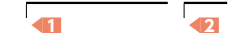
Unit : mm

Part Number	L	B	Mass (g)
SRD-6.35	210	6.35	98



● Part Number Specification

SRHS-M5-16



Individual Sales	Cleanroom Wash & Packaging	Screw Length Adjustment	Vibration Resistant	Modification process for captive use
Available / Add'l charge	Available / Add'l charge	Available / Add'l charge	Available / Add'l charge	Available / Add'l charge