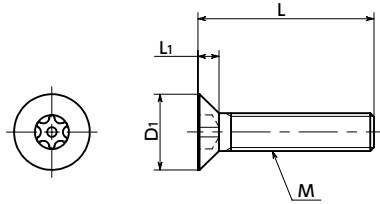


# SRFXS Flat Head Screws with Hexalobular Socket and Pin

SUS Stainless steel Tamper Resistance



● Material/Finish



SRFXS	
Main Body	Equivalent to SUS304
Strength Class	Equivalent to A2-50



- Flat head bolt with a pin at the center of the hexalobular socket \*1.
- This prevents mounting and removing with regular tools.
- Install and remove with **SRX** Dedicated Wrench or **SRXB** Dedicated Bit and **SRD** Dedicated Magnetic Screwdriver together.

\*1 : The hexalobular shape is prescribed by JIS B 1015: 2008(ISO 10664: 2005)"Hexalobular internal driving feature for bolts and screws".

● Application

Equipment/devices disassembly/tampering prevention  
Theft prevention for outdoor facilities  
Security measures  
Safety measures

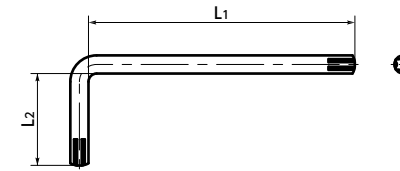
Part Number	M (Coarse)		L								D1	L1	Applicable Wrench Type	Applicable Bit Type		Hexalobular Socket No.	Mass (g)	Qty per Pack
	Nominal of Thread	Pitch	6	8	10	12	16	20	25	30				Bit	Driver			
<b>SRFXS-M3</b>	M3	0.5	6	8	10	12					6	1.75	SRX-10	SRXB-10	SRD-6.35	10	0.48 - 0.72	10
<b>SRFXS-M4</b>	M4	0.7	8	10	12	16	20				8	2.3	SRX-20	SRXB-20	SRD-6.35	20	1 - 1.9	10
<b>SRFXS-M5</b>	M5	0.8	8	10	12	16	20	25			10	2.8	SRX-25	SRXB-25	SRD-6.35	25	1.9 - 3.9	10
<b>SRFXS-M6</b>	M6	1			10	12	16	20	25	30	12	3.4	SRX-30	SRXB-30	SRD-6.35	30	3.3 - 7	10

● When purchasing less volume than one full bag, a separate handling fee is charged. For details, see the Sold Separately Service.

● **SRX** Dedicated Wrench

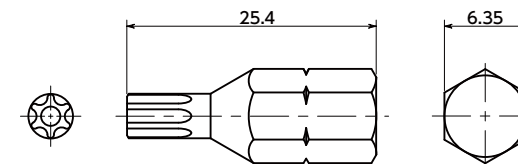
Unit : mm

Part Number	L1	L2	Mass (g)
<b>SRX-10</b>	60	20	3.7
<b>SRX-20</b>	67	23	8.2
<b>SRX-25</b>	70	25	11
<b>SRX-30</b>	81	28	20



● **SRXB** Bit Part No.

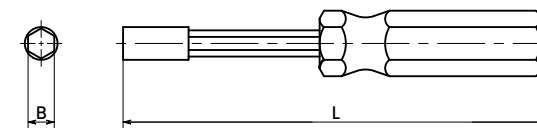
Part Number	Mass (g)
<b>SRXB-10</b>	4.36
<b>SRXB-20</b>	4.57
<b>SRXB-25</b>	4.79
<b>SRXB-30</b>	5.50



● **SRD** Dedicated Magnet Screwdriver

Unit : mm

Part Number	L	B	Mass (g)
<b>SRD-6.35</b>	210	6.35	98



● Related Products

Washer for Flat Head Screw  
**SWAS-RW** is available.



● Part Number Specification

**SRFXS-M5-16**

Individual Sales	Cleanroom Wash & Packaging	Screw Length Adjustment	Vibration Resistant	Modification process for captive use
Available / Add'l charge	Available / Add'l charge	Available / Add'l charge	Available / Add'l charge	Not Available