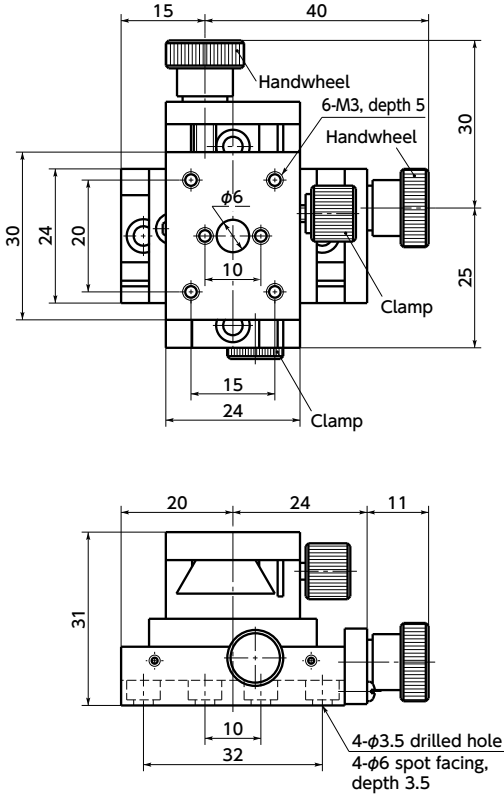


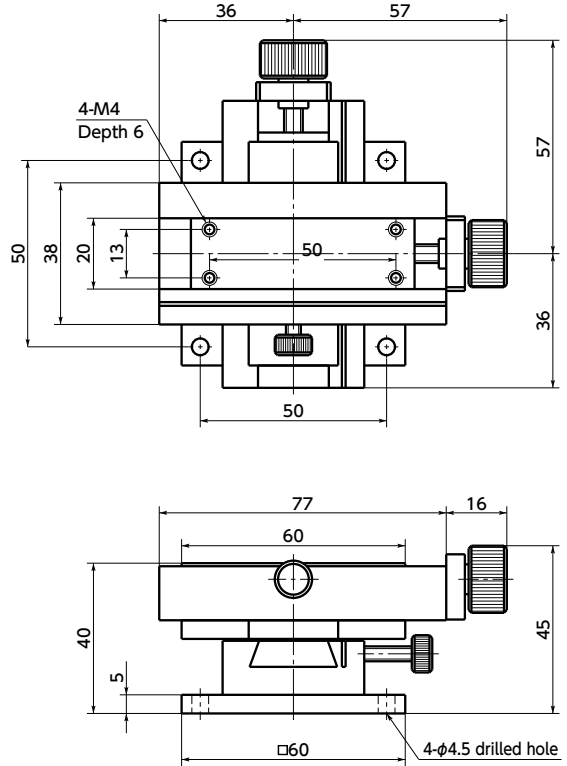
**TAS-60XY**



**TAS-30XY**



**TAS-60XY**



### ⚠ Precautions for Use

**TAS-60XY** has the feeding handwheel above the stage surface. There may be interference depending on the shape of work fixed on the stage.

- Part number specification

## TAS-30XY



- Two axes (X and Y axes) can be moved.
- Screws are used for micromotion feed.
- Dovetail groove method is adopted for the travel guide. A rattle correction function is provided.

- Material/Finish



	TAS-30XY	TAS-60XY
Stage	Brass Black chrome plating	Brass Black chrome plating
Main body	Brass Coating (Silver)	Brass Coating (Black)
Lower surface spacer	Aluminum Alloy Anodized (Black)	Aluminum Alloy Anodized (Black)

Part Number	Stage Face	Travel Guide	Travel Distance	Screw Pitch	Mass (g)
<b>TAS-30XY</b>	24×30	Dovetail Groove Method	±4	0.5	400
<b>TAS-60XY</b>	18×60	Dovetail Groove Method	±7.5	0.5	900

Unit : mm

Part Number	Straightness	Parallelism	Position Resolution	Withstand load (N)
<b>TAS-30XY</b>	0.02	0.1	0.01	68.7
<b>TAS-60XY</b>	0.02	0.1	0.01	147

Unit : mm

- Pan head machine screws for mounting (M3 x 5 **TAS-30XY**) and hex socket head cap screw (M4 x 10 **TAS-60XY**) are provided.