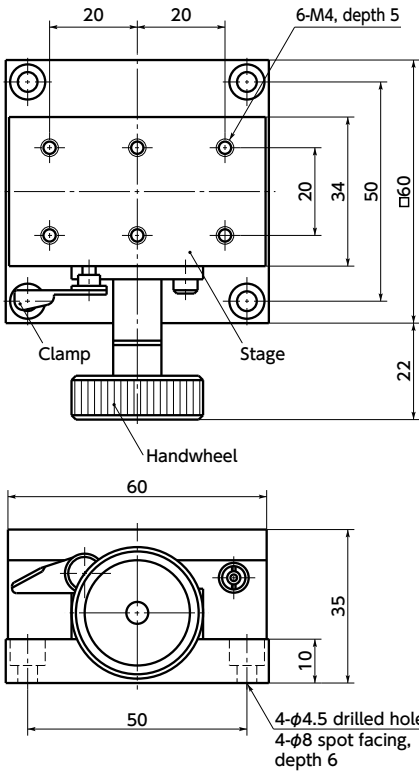
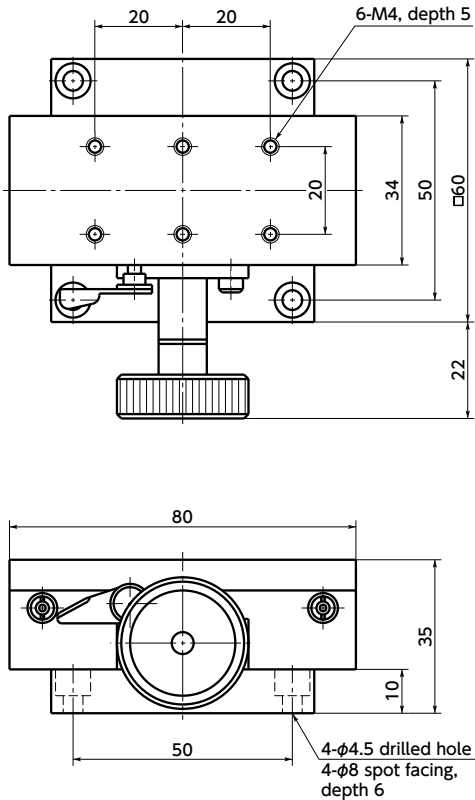


TAR-80

TAR-60



TAR-80



- Part number specification

TAR-60



- Rack-and-pinion method allows for quicker feeding.
- Dovetail groove method is adopted for the travel guide. A rattle correction function is provided.

- Material/Finish



	TAR
Stage	Brass Black chrome plating
Main Body	Brass Coating (Silver)
Lower surface spacer	Aluminum Alloy Anodized (Black)

Unit : mm

Part Number	Stage Face	Travel Guide	Travel Distance	Stroke (mm/Rotation)	Mass (g)
TAR-60	34×60	Dovetail Groove Method	±15	20	500
TAR-80	34×80	Dovetail Groove Method	±25	20	800

Unit : mm

Part Number	Straightness	Parallelism	Display Resolution	Position Resolution	Withstand load (N)
TAR-60	0.02	0.06	0.1	0.1	147
TAR-80	0.03	0.06	0.1	0.1	196

- Pan hex socket head cap screws for mounting (M4 x 8) are provided.