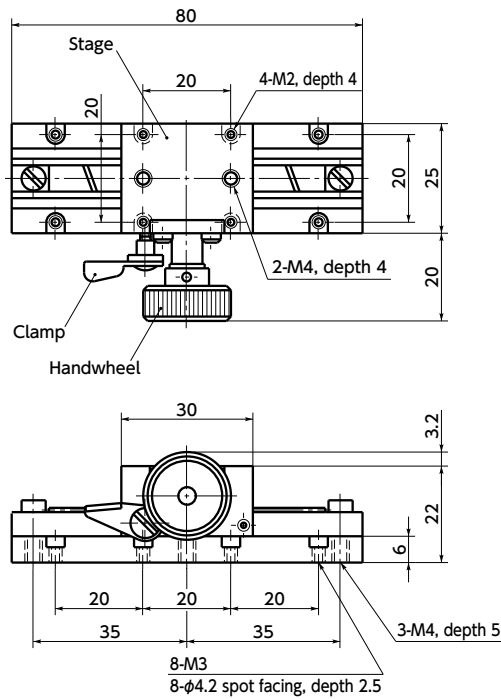
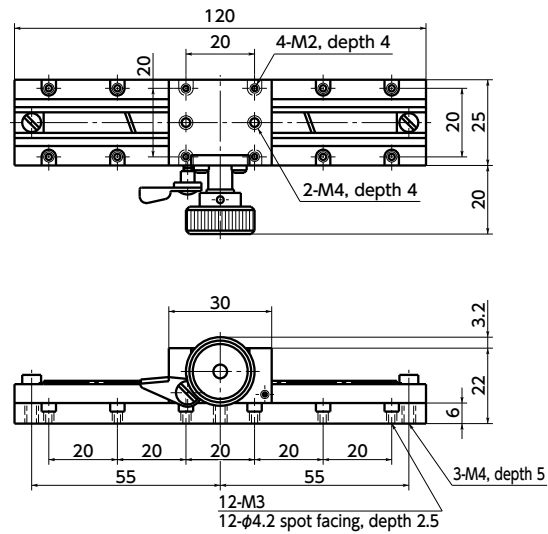


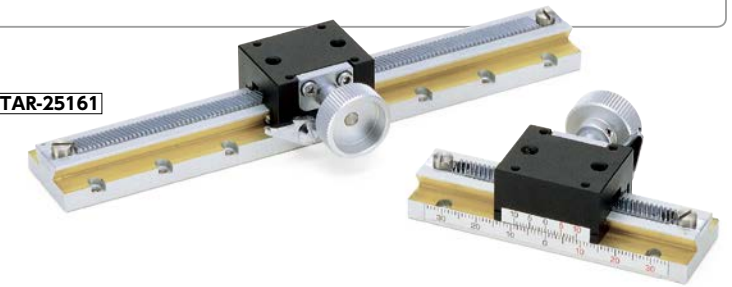
TAR-2581



TAR-25121



TAR-25161



TAR-2581

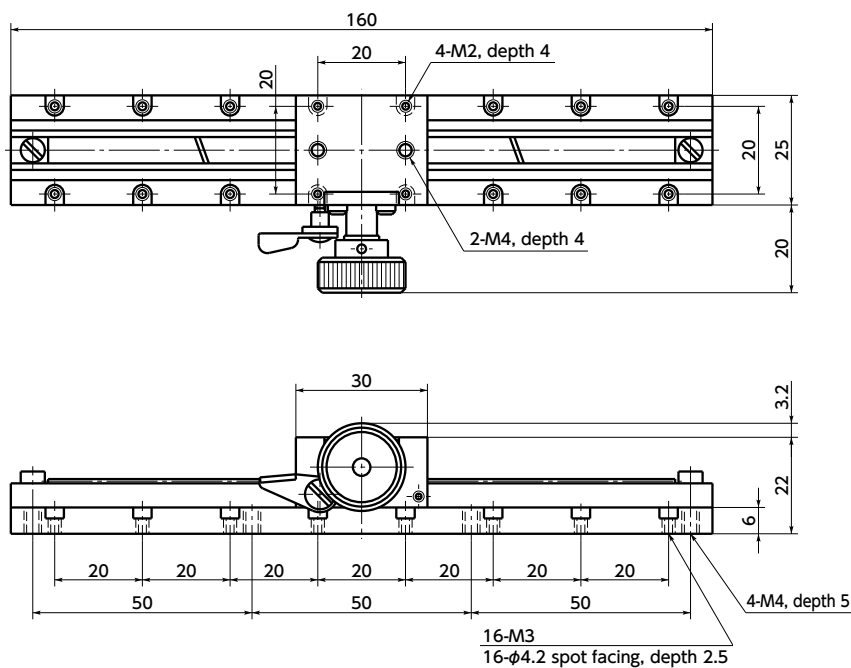
- Rack-and-pinion method allows for quicker feeding.
- Even when the entire stage surface is moved by stroke, the stage surface does not run off the main body. The feeding handwheel travel area and main body area are the necessary installation area.
- Dovetail groove method is adopted for the travel guide. A rattle correction function is provided.
- Mounting holes and fixing holes are machined on both upper and lower surfaces. It is possible to turn over the stage and use the lower surface as a stage surface.

• Material/Finish



	TAR
Stage	Brass Black chrome plating
Lower surface spacer	Brass Chrome Plating

TAR-25161



Unit : mm

Part Number	Stage Face	Travel Guide	Travel Distance	Stroke (mm/Rotation)	Mass (g)
TAR-2581	25×30	Dovetail Groove Method	±25	20	220
TAR-25121	25×30	Dovetail Groove Method	±45	20	300
TAR-25161	25×30	Dovetail Groove Method	±65	20	360

Unit : mm

Part Number	Straightness	Parallelism	Display Resolution	Position Resolution	Withstand load (N)
TAR-2581	0.03	0.05	0.1	0.1	49
TAR-25121	0.04	0.08	0.1	0.1	49
TAR-25161	0.05	0.08	0.1	0.1	49

• Pan head machine screws for mounting (M2 x 6) are provided.

- Mounting
Spot facing is performed on the screw hole for mounting. Therefore, fixing from vertical directions is possible.
- Fixing from above — M2
- Fixing from beneath — M3/M4

• Part number specification

TAR-2581

