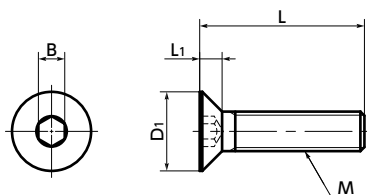




# SNFCM Hex Socket Countersunk Head Screws - Molybdenum

Cleanroom wash & packaging Heat-resistance



## ● Mechanical property

	Pure molybdenum	SUS304
Tensile strength (N/mm <sup>2</sup> )	515	520 or above
0.2% Proof Stress (N/mm <sup>2</sup> )	380	205 or Higher
Extension (%)	15	40 or above

● Values in chart are for reference only. They are not guaranteed values.

## ● Physical property

	Pure molybdenum	SUS304
Specific gravity	10.2	7.93
Longitudinal elastic modulus (Gpa)	327	193
Electric resistivity (μΩ·m)	0.058	0.7
Heat thermal conductivity (W/(m·K))	142	17
Linear expansion coefficient (K <sup>-1</sup> )	5.1 x 10 <sup>-6</sup>	17.3 x 10 <sup>-6</sup>

● Values in chart are for reference only. They are not guaranteed values.

- Made of pure molybdenum.
- Melting point: 2623°C. Excellent heat resistance.
- The flat head does not protrude after tightening.
- Cleanroom wash and cleanroom packing are completed. → P.xxxx

## ● Application

Sputtering equipment and high temperature furnaces

## ● Material/Finish



	SNFCM
Main body	Pure molybdenum

## ⚠ Precautions for Use

Note that in an oxidizing atmosphere, sublimation will begin at 600°C or higher.

Unit : mm

Part Number	M (Coarse)		L					D1	L1	B	Tension Rupture Load*1 (N)	Mass (g)
	Nominal of Thread	Pitch										
<b>SNFCM-M2</b>	M2	0.4	5	6	8	10	4	1.2	1.3	1130	0.21 - 0.33	
<b>SNFCM-M3</b>	M3	0.5		6	8	10	6	1.75	2	2760	0.69 - 1	
<b>SNFCM-M4</b>	M4	0.7			8	10	8	2.3	2.5	4820	1.5 - 2.4	

\*1: Values in chart are for reference only. They are not guaranteed values.

## ● Part number specification

### SNFCM-M2-6



Batch cleanroom packing is provided for orders containing multiple items of the same size.

Individual Sales → P.xxxxx	Cleanroom Wash & Packaging → P.xxxxx	Screw Length Adjustment → P.xxxxx	Vibration Resistant → P.xxxxx	Modification process for captive use → P.xxxxx
1 piece in 1 pack	Cleanroom washed and packed	Available / Add'l charge	Available / Add'l charge	Not Available