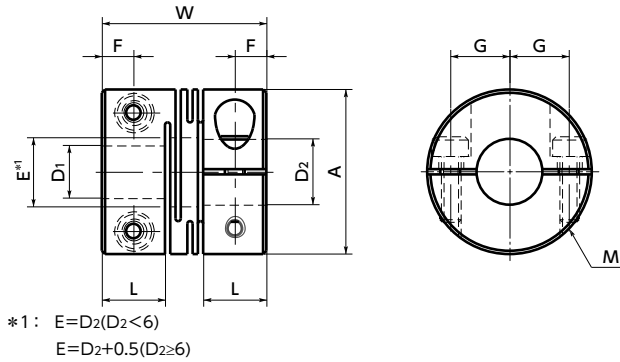


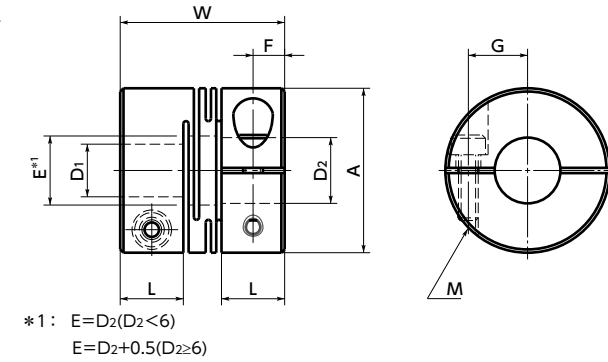
MWS-C/MWSS-C Flexible Couplings - Slit Type - Clamping Type

Zero Backlash SUS Stainless steel

MWS-C Made of aluminum alloy



MWSS-C Made of all stainless steel



Dimensions

Unit : mm

Part Number	A	L	W	F	G	M	Screw Tightening Torque (N·m)	Standard Bore Diameter D1-D2											
								4 - 4	4 - 5	4.5 - 5	5 - 5	5 - 6	6 - 6	6 - 7	6 - 8	8 - 8	8 - 10	10 - 10	10 - 12
MWS-12C	12	5.2	14	2.6	4	M2	0.5	4 - 4	4 - 5	4.5 - 5	5 - 5								
MWS-16C	16	6.8	18	3.4	5	M2.5	1	4.5 - 5	5 - 5	5 - 6	6 - 6								
MWS-20C	20	7.65	20	3.8	6.5	M2.5	1	5 - 6	5 - 8	6 - 6	6 - 8	8 - 8							
MWS-25C	25	9.6	25	4.8	9	M3	1.5	5 - 6	6 - 6	6 - 8	6 - 10	8 - 8	8 - 10						
MWS-32C	32	12.6	32	6.3	11	M4	2.5	8 - 8	8 - 10	8 - 12	10 - 10	10 - 12	12 - 12	12 - 14					
MWSS-12C	12	5.2	14	2.6	4	M2	0.5	4 - 4	4 - 4.5	4 - 5	4.5 - 5	5 - 5							
MWSS-16C	16	6.8	18	3.4	5	M2.5	1	4.5 - 5	5 - 5	5 - 6	6 - 6								
MWSS-20C	20	7.65	20	3.8	6.5	M2.5	1	5 - 6	5 - 8	6 - 6	6 - 7	6 - 8	8 - 8						
MWSS-25C	25	9.6	25	4.8	9	M3	1.5	5 - 6	6 - 6	6 - 8	6 - 10	8 - 8	8 - 10	10 - 10					
MWSS-32C	32	12.6	32	6.3	11	M4	2.5	8 - 8	8 - 10	10 - 10	10 - 12	12 - 12	12 - 14						

- All products are provided with hex socket head cap screw.
- Recommended tolerance for shaft diameters is h6 and h7.
- For the shaft insertion amount to the coupling, see Mounting/maintenance.

⚠ Precautions for Use

- In case of mounting on D-cut shaft, be careful about the position of the D-cut surface of the shaft. → P.xxxx
- There are sizes where the hex socket head bolt exceeds the outer diameter of the coupling and the rotating diameter is larger than the outer diameter. Please be careful of the interference of coupling. → P.xxxx

Performance

Part Number	Max. Bore Diameter (mm)	Rated *1 Torque (N·m)	Max. Rotational Frequency (min ⁻¹)	Moment *2 of Inertia (kg·m ²)	Static Torsional Stiffness (N·m/rad)	Max. Angular Misalignment (°)	Max. Axial Misalignment (mm)	Mass *2 (g)
MWS-12C	5	0.4	52000	6.4×10^{-8}	80	1	±0.1	3
MWS-16C	6	0.5	39000	2.9×10^{-7}	180	1	±0.2	8
MWS-20C	8	1	31000	7.5×10^{-7}	200	1	±0.2	13
MWS-25C	10	2	25000	2.3×10^{-6}	780	1	±0.2	25
MWS-32C	14	4	19000	8.1×10^{-6}	1100	1	±0.2	53
MWSS-12C	5	0.3	52000	1.8×10^{-7}	140	1	±0.1	8.5
MWSS-16C	6	0.5	39000	7.8×10^{-7}	240	1	±0.1	21
MWSS-20C	8	1	31000	2.1×10^{-6}	330	1	±0.1	36
MWSS-25C	10	2	25000	6.3×10^{-6}	720	1	±0.2	69
MWSS-32C	14	3.5	19000	2.2×10^{-5}	1300	1	±0.2	150

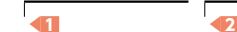
*1 : Correction of rated torque due to load fluctuation is not required.

The shaft's slip torque may be smaller than the coupling's rated torque depending on the shaft bore. → P.xxxx

*2 : These are values with max. bore diameter.

- Part number specification

MWS-16C - 5-6



Additional Keyway at Shaft Hole → P.xxxx Cleanroom Wash & Packaging → P.xxxx Change to Stainless Steel Screw → P.xxxx
 Bore additional modification only/ Add'l charge Please feel free to contact us Please feel free to contact us