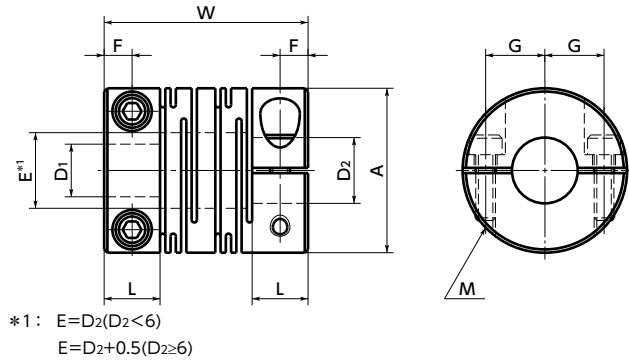


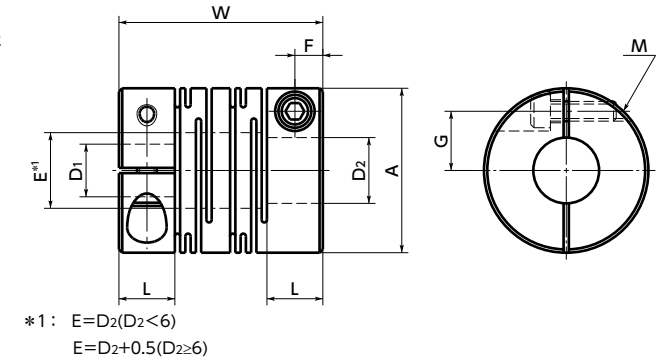
MST-C/MSTS-C Flexible Couplings - Slit Type - Clamping Type

Zero Backlash SUS Stainless steel

MST-C Made of aluminum alloy
MSTS-C Made of all stainless steel
 Outside diameter $\phi 40 - \phi 63$



MSTS-C Made of all stainless steel
 Outside diameter $\phi 12 - \phi 32$



Dimensions

Unit : mm

Part Number	A	L	W	F	G	M	Screw Tightening Torque (N·m)
MST-12C	12	5	18.5	2.5	4	M2	0.5
MST-16C	16	6.5	23	3.25	5	M2.5	1
MST-20C	20	7.5	26	3.75	6.5	M2.5	1
MST-25C	25	8.5	31	4.25	9	M3	1.5
MST-32C	32	12	41	6	11	M4	2.5
MST-40C	40	17	56	8.5	14	M5	4
MST-50C	50	21	71	10.5	18	M6	8
MST-63C	63	26	90	13	24	M8	16
MSTS-12C	12	5	18.5	2.5	4	M2	0.5
MSTS-16C	16	6.5	23	3.25	5	M2.5	1
MSTS-20C	20	7.5	26	3.75	6.5	M2.5	1
MSTS-25C	25	8.5	31	4.25	9	M3	1.5
MSTS-32C	32	12	41	6	11	M4	2.5
MSTS-40C	40	17	56	8.5	14	M5	4
MSTS-50C	50	21	71	10.5	18	M6	8
MSTS-63C	63	26	90	13	24	M8	16

Part Number	Standard Bore Diameter D1-D2							
MST-12C	MSTS-12C	4 - 4	4 - 5	4.5 - 5	5 - 5			
MST-16C	MSTS-16C	4.5 - 5	4.5 - 6	5 - 5	5 - 6	6 - 6		
MST-20C	MSTS-20C	5 - 6 6.35 - 6.35*1	5 - 6.35 6.35 - 8	5 - 7 8 - 8	5 - 8	6 - 6	6 - 6.35	6 - 7 6 - 8
MST-25C	MSTS-25C	5 - 6 8 - 9.525	6 - 6 8 - 10	6 - 6.35 9.525 - 10	6 - 8 10 - 10	6 - 10	6.35 - 8	6.35 - 10 8 - 8
MST-32C	MSTS-32C	8 - 8 10 - 12	8 - 9.525 10 - 14	8 - 10 12 - 12	8 - 12 12 - 14	9.525 - 10	9.525 - 12	10 - 10 10 - 11
MST-40C	MSTS-40C	8 - 8 15 - 16	8 - 10 16 - 16	10 - 10	12 - 12	12 - 14	14 - 14	14 - 16 15 - 15
MST-50C	MSTS-50C	12 - 14	14 - 14	15 - 15	16 - 16	18 - 18		
MST-63C	MSTS-63C	14 - 14	16 - 16	18 - 18				

*1: Only **MST-**C** is a standard product. For **MSTS-**C**, use the additional modification service **BT**.

- All products are provided with hex socket head cap screw.
- Recommended tolerance for shaft diameters is h6 and h7.
- MST-C** has variable slit shapes depending on the size. See the Slit Details.
- For the shaft insertion amount to the coupling, see Mounting/maintenance.

Performance

Part Number	Max. Bore Diameter (mm)	Rated *1 Torque (N·m)	Max. Rotational Frequency (min ⁻¹)	Moment of Inertia *2 (kg·m ²)	Static Torsional Stiffness (N·m/rad)	Max. Lateral Misalignment (mm)	Max. Angular Misalignment (°)	Max. Axial Misalignment (mm)	Mass *2 (g)
MST-12C	5	0.4	52000	7.8×10^{-8}	45	0.1	2	±0.3	3.6
MST-16C	6	0.5	39000	3.4×10^{-7}	80	0.1	2	±0.4	9.2
MST-20C	8	1	31000	9.1×10^{-7}	170	0.1	2	±0.4	16
MST-25C	10	2	25000	2.6×10^{-6}	380	0.15	2	±0.5	28
MST-32C	14	4	19000	9.7×10^{-6}	500	0.15	2	±0.5	64
MST-40C	18	8	15000	3.3×10^{-5}	700	0.2	2	±0.5	140
MST-50C	22	16	12000	1.0×10^{-4}	1800	0.2	2	±0.5	270
MST-63C	30	32	10000	3.2×10^{-4}	3100	0.2	2	±0.5	530
MSTS-12C	5	0.3	52000	2.2×10^{-7}	64	0.1	2	±0.2	10
MSTS-16C	6	0.5	39000	9.0×10^{-7}	85	0.1	2	±0.3	25
MSTS-20C	8	1	31000	2.5×10^{-6}	250	0.1	2	±0.3	43
MSTS-25C	10	2	25000	7.1×10^{-6}	330	0.15	2	±0.4	78
MSTS-32C	14	3.5	19000	2.7×10^{-5}	850	0.15	2	±0.5	170
MSTS-40C	18	8	15000	9.0×10^{-5}	1000	0.2	2	±0.5	370
MSTS-50C	22	15	12000	2.8×10^{-4}	1400	0.2	2	±0.5	750
MSTS-63C	30	35	10000	8.8×10^{-4}	1800	0.2	2	±0.5	1400

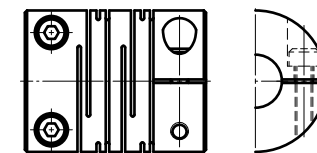
*1: Correction of rated torque due to load fluctuation is not required.

The shaft's slip torque may be smaller than the coupling's rated torque depending on the shaft bore. → P.xxxx

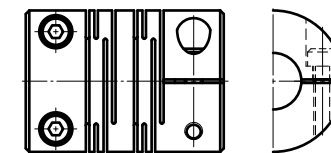
*2: These are values with max. bore diameter.

Slit Details

MST-C



Outside diameter $\phi 12 - \phi 32$



Outside diameter $\phi 40 - \phi 63$

Precautions for Use

- In case of mounting on D-cut shaft, be careful about the position of the D-cut surface of the shaft. → P.xxxx
- There are sizes where the hex socket head bolt exceeds the outer diameter of the coupling and the rotating diameter is larger than the outer diameter. Please be careful of the interference of coupling. → P.xxxx

Part number specification

MST-40C-12-14

Additional Keyway at Shaft Hole → P.xxxx Cleanroom Wash & Packaging → P.xxxx Change to Stainless Steel Screw → P.xxxx
 Bore additional modification only/ Add'l charge Please feel free to contact us Please feel free to contact us