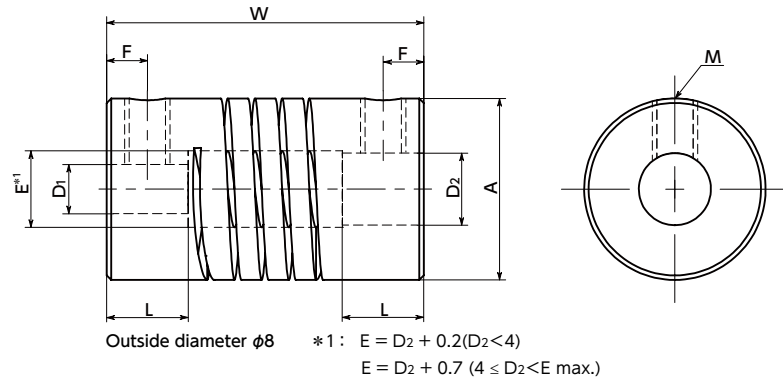


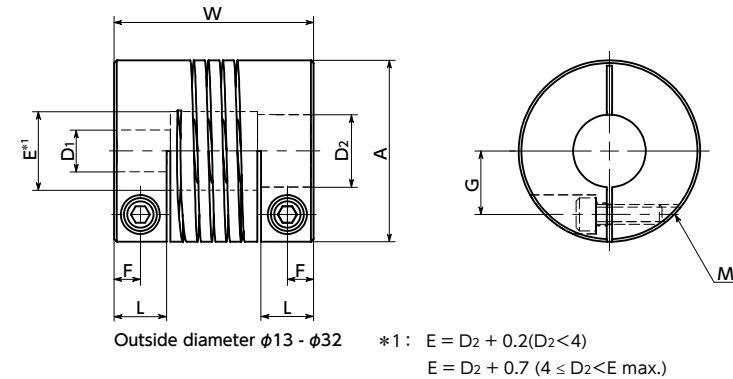
MSH Flexible Couplings - Beam Type

Zero Backlash

MSH



MSH-C



Dimensions

Unit: mm

Part Number	A	L	W	E max.	F	G	M	Screw Tightening Torque (N·m)
MSH-8	8	3.6	14	3.175	1.8	-	M2	0.3
MSH-13C	13	5	19	3.6	2.5	4.4	M1.6	0.25
MSH-16C	16	5	20	5	2.5	5.2	M1.6	0.25
MSH-20C	20	5.8	22	6.3	2.9	7	M2	0.5
MSH-26C	26	7.2	31	9.5	3.6	9.2	M2.5	1
MSH-32C	32	13	41	15.8	6.5	11.5	M3	1.5

Part Number	Standard Bore Diameter (Dimensional Allowance H8)								
	D1-D2								
MSH-8	1.5 mm - 1.5 mm	1.5 mm - 3 mm	2 mm - 2 mm	2 mm - 3 mm	3/32in - 3/32in	3/32in - 1/8in	3 mm - 3 mm	1/8in - 1/8in	
MSH-13C	3 mm - 3 mm	1/8in - 1/8in	4 mm - 4 mm	4 mm - 5 mm	5 mm - 5 mm				
MSH-16C	3 mm - 5 mm	1/8in - 1/8in	1/8in - 5/32in	1/8in - 3/16in	5/32in - 5/32in	5/32in - 3/16in	4 mm - 4 mm	4 mm - 5 mm	
MSH-20C	3 mm - 5 mm	1/8in - 1/8in	1/8in - 5/32in	1/8in - 3/16in	1/8in - 1/4in	5/32in - 5/32in	5/32in - 3/16in	5/32in - 1/4in	
MSH-26C	4 mm - 4 mm	4 mm - 5 mm	3/16in - 3/16in	3/16in - 5 mm	3/16in - 1/4in	5 mm - 5 mm	5 mm - 6 mm	5 mm - 1/4in	
MSH-32C	5 mm - 5 mm	5 mm - 6 mm	5 mm - 1/4in	1/4in - 1/4in	1/4in - 5/16in	1/4in - 8 mm	1/4in - 3/8in	1/4in - 10 mm	
	5/16in - 5/16in	5/16in - 3/8in	8 mm - 8 mm	8 mm - 10 mm	3/8in - 3/8in				
MSH-32C	3/8in - 3/8in	3/8in - 1/2in	3/8in - 5/8in	10 mm - 10 mm	1/2in - 1/2in	1/2in - 5/8in	5/8in - 5/8in		

- MSH-8 is provided with hex socket set screws.
- MSH-13C to MSH-32C are provided with hex socket head cap screws.
- Recommended tolerance for shaft diameters is h6 and h7.
- For the shaft insertion amount to the coupling, see Mounting/maintenance.

Performance

Part Number	Max. Bore Diameter (mm)	Max. Rotational Frequency (min ⁻¹)	Moment *1 (kg·m ²)	Static *1 Torsional Stiffness (N·m/rad)	Max. Lateral Misalignment		Max. Angular Misalignment (°)	Max. Axial Misalignment (mm)	Mass *1 (g)
					No Load (mm)	With Load (mm)			
MSH-8	3.175	78000	1.0×10^{-7}	1.2	0.2	0.11	5	±0.25	1.4
MSH-13C	5	48000	6.8×10^{-7}	4.6	0.25	0.11	5	±0.25	5.8
MSH-16C	7	39000	1.2×10^{-6}	5.9	0.25	0.18	5	±0.25	8.4
MSH-20C	8	31000	2.6×10^{-6}	9.3	0.25	0.18	5	±0.25	14.1
MSH-26C	12	24000	1.2×10^{-5}	22	0.25	0.25	5	±0.25	33.4
MSH-32C	16	19000	3.8×10^{-5}	17	0.25	0.25	5	±0.25	60.6

*1: These are values with max. bore diameter.

⚠ Precautions for Use

- In case of mounting on D-cut shaft, be careful about the position of the D-cut surface of the shaft. → P.xxxx
- There are sizes where the hex socket head bolt exceeds the outer diameter of the coupling and the rotating diameter is larger than the outer diameter. Please be careful of the interference of coupling. → P.xxxx

Additional Keyway at Shaft Hole → P.xxxx | Cleanroom Wash & Packaging → P.xxxx | Change to Stainless Steel Screw → P.xxxx
 Bore additional modification only/ Add'l charge | Please combine with Stainless Steel Screw Alteration Service | Available / Add'l charge

• Torque Value Differs According to the Bore Diameter. Refer to the Larger Bore Diameter of D1 and D2.

Unit: N·m

Part Number	Bore Diameter	Torque		
		Instantaneous Transmission	Single-Direction Rotation	Forward / Reverse Rotation
MSH-8	1.5 mm	0.2	0.1	0.05
	2 mm	0.17	0.08	0.04
	3/32in	0.15	0.07	0.03
	3 mm	0.15	0.07	0.03
MSH-13C	1/8in	0.11	0.05	0.02
	3 mm	0.44	0.22	0.11
	1/8in	0.42	0.21	0.1
	4 mm	0.4	0.2	0.1
MSH-16C	5 mm	0.4	0.2	0.1
	3 mm	0.98	0.49	0.24
	1/8in	0.96	0.48	0.24
	5/32in	0.86	0.43	0.21
MSH-20C	4 mm	0.79	0.39	0.19
	3/16in	0.7	0.35	0.17
	5 mm	0.7	0.35	0.17
	3 mm	1.6	0.8	0.4
MSH-26C	1/8in	1.57	0.78	0.39
	5/32in	1.44	0.72	0.36
	4 mm	1.35	0.67	0.33
	3/16in	1.24	0.62	0.31
MSH-32C	5 mm	1.2	0.6	0.3
	6 mm	1.11	0.55	0.27
	1/4in	1.01	0.5	0.25
	5 mm	4.27	2.13	1.06
MSH-26C	6 mm	3.43	1.71	0.85
	1/4in	3.32	1.66	0.83
	5/16in	2.84	1.42	0.71
	8 mm	2.82	1.41	0.7
MSH-32C	3/8in	2.48	1.24	0.62
	10 mm	2.48	1.24	0.62
	3/8in	5.78	2.89	1.44
	10 mm	5.55	2.77	1.38
MSH-26C	1/2in	4.4	2.2	1.1
	5/8in	3.27	1.63	0.81

• Part number specification

MSH-26C-1/4-8

