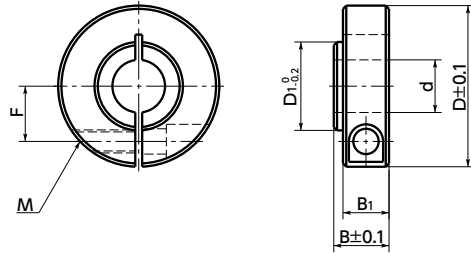


SUS Stainless steel



- Set collar for securing bearings.
- It can be fixed by pressing the bearing inner wheel only on the convex of the main body.
- Optimal for securing bearing when it is difficult to fix the snap ring, etc. to the shaft.
- Clamping Type. Mounting and removing are easy. Moreover this does not scratch the shaft.

● Material/Finish



	NSCS-SB
Main Body	SUS304
Hex Socket Head Cap Screw	SUSXM7



Part Number	d	B	B ₁	D	D ₁	F	M(coarse)*1	Applicable bearings	Unit : mm	
									Mass (g)	
NSCS-3-8-SB	3	8.5	7.5	15	5	4.5	M3	693ZZ · 623ZZ		9
NSCS-4-8-SB	4	8.5	7.5	15	6	4.5	M3	694ZZ · 624ZZ		9
NSCS-5-8-SB	5	8.5	7.5	20	7.2	6	M3	695ZZ · 605ZZ · 625ZZ		16
NSCS-6-8-SB1	6	8.5	7.5	20	9.4	6.5	M3	606ZZ		15
NSCS-6-8-SB2	6	8.5	7.5	20	9.7	6.5	M3	626ZZ		16
NSCS-6-8-SB3	6	8.5	7.5	20	9.1	6.5	M3	696ZZ		16
NSCS-8-8-SB1	8	8.5	7.5	20	11.7	7	M3	608ZZ		14
NSCS-8-8-SB2	8	8.5	7.5	20	13.2	7	M3	628ZZ		15
NSCS-8-8-SB3	8	8.5	7.5	20	11.2	7	M3	698ZZ		15
NSCS-10-11-SB1	10	11	9	30	14.7	9	M4	6000ZZ		42
NSCS-10-11-SB2	10	11	9	30	17.2	9	M4	6200ZZ		43
NSCS-10-11-SB3	10	11	9	30	14.2	9	M4	6900ZZ		42
NSCS-12-11-SB1	12	11	9	30	17.2	10	M4	6001ZZ		40
NSCS-12-11-SB2	12	11	9	30	18.7	10	M4	6201ZZ		41
NSCS-12-11-SB3	12	11	9	30	16.2	10	M4	6901ZZ		40
NSCS-15-12-SB1	15	12	11	35	20.2	12	M5	6002ZZ		65
NSCS-15-12-SB2	15	12	11	35	21.7	12	M5	6202ZZ		65
NSCS-15-12-SB3	15	12	11	35	19.2	12	M5	6902ZZ		65

*1: Hex socket head cap screw is provided.

Part Number	d	B	B ₁	D	D ₁	F	M(coarse)*1	Applicable bearings	Unit : mm	
									Mass (g)	
NSCS-17-12-SB1	17	12	11	35	22.2	13	M5	6003ZZ		61
NSCS-17-12-SB2	17	12	11	35	24.2	13	M5	6203ZZ		62
NSCS-17-12-SB3	17	12	11	35	21.2	13	M5	6903ZZ		60
NSCS-20-12-SB1	20	12	11	40	27.2	14	M5	6004ZZ		78
NSCS-20-12-SB2	20	12	11	40	29.2	14	M5	6204ZZ		79
NSCS-20-12-SB3	20	12	11	40	25.2	14	M5	6904ZZ		78
NSCS-25-15-SB1	25	15	13	45	31.7	17	M5	6005ZZ		111
NSCS-25-15-SB2	25	15	13	45	33.2	17	M5	6205ZZ		112
NSCS-25-15-SB3	25	15	13	45	30.2	17	M5	6905ZZ		111
NSCS-30-15-SB1	30	15	13	55	38.2	20	M6	6006ZZ		169
NSCS-30-15-SB2	30	15	13	55	40.2	20	M6	6206ZZ		170
NSCS-30-15-SB3	30	15	13	55	35.2	20	M6	6906ZZ		165
NSCS-35-15-SB1	35	15	13	60	43.2	23	M6	6007ZZ		189
NSCS-35-15-SB2	35	15	13	60	46.2	23	M6	6207ZZ		193
NSCS-35-15-SB3	35	15	13	60	41.2	23	M6	6907ZZ		188
NSCS-40-17-SB1	40	17	15	70	48.2	26	M8	6008ZZ		298
NSCS-40-17-SB2	40	17	15	70	52.2	26	M8	6208ZZ		303
NSCS-40-17-SB3	40	17	15	70	46.2	26	M8	6908ZZ		295

*1: Hex socket head cap screw is provided.

Cleanroom Wash & Packaging → P.xxxx	Screw Length Adjustment → P.xxxx	Vibration Resistant → P.xxxx	Laser Marking → P.xxxx
Please feel free to contact us	Not Available	Not Available	Available / Add'l charge

● Part number specification

NSCS-10-11-SB2

