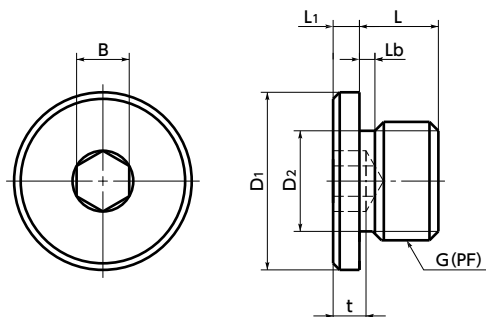


# SFF/SFFS Hex Socket Flange Head Screw Plugs



SUS Stainless steel



- Part number specification

## SFF-3



- Screw plugs for high-power hydraulic applications.
- **SFF** is made of steel and can be used in highpressure applications up to 49 MPa.

### ● Application

Hydraulic equipment, pneumatic machinery and equipment, and general industrial machines

### ● Material/Finish



	SFF	SFFS
Main Body	SCM435 (Hardness 32 - 42 HRC) Ferrosoferric Oxide Coating (Black)	SUS304

### SFF Steel • Ferrosoferric Oxide Coating

Unit : mm

Part Number	G (PF) Nominal of Thread	L	D1	L1	D2	B	t	Lb	O-ring No.	Recommendation Torque (N·m)	Mass (g)
<b>SFF-1</b>	G1/8	10	16	4	8.2	5	3	2	P8	14.7	9
<b>SFF-2</b>	G1/4	12	21	4	11.2	6	4	2.5	P11	29.4	17
<b>SFF-3</b>	G3/8	12	24	4	14.2	8	5	2.5	P14	49	27
<b>SFF-4</b>	G1/2	16	30	4	18.2	10	6	2.5	P18	78.5	54
<b>SFF-6</b>	G3/4	16	40	5	23.7	12	7	3.5	P24	147	90
<b>SFF-8</b>	G1	21	45	5	29.2	17	10	3.5	P29	245	177

### SFFS Stainless Steel

Unit : mm

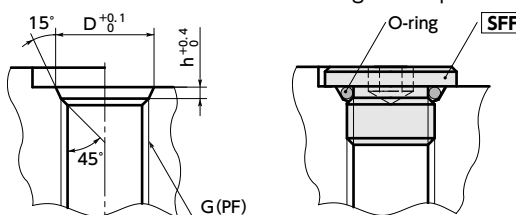
Part Number	G (PF) Nominal of Thread	L	D1	L1	D2	B	t	Lb	O-ring No.	Recommendation Torque (N·m)	Mass (g)
<b>SFFS-1</b>	G1/8	10	16	4	8.2	5	3	2	P8	7.4	9
<b>SFFS-2</b>	G1/4	12	21	4	11.2	6	4	2.5	P11	14.7	17
<b>SFFS-3</b>	G3/8	12	24	4	14.2	8	5	2.5	P14	24.5	27
<b>SFFS-4</b>	G1/2	16	30	4	18.2	10	6	2.5	P18	39.3	54
<b>SFFS-6</b>	G3/4	16	40	5	23.7	12	7	3.5	P24	73.5	90
<b>SFFS-8</b>	G1	21	45	5	29.2	17	10	3.5	P29	122.5	177

### ● Installation Dimensions

Unit : mm

G (PF)	D	h
G 1/8	11.6	2
G 1/4	15.6	2.5
G 3/8	18.6	2.5
G 1/2	22.6	2.5
G 3/4	29.8	3.5
G1	35.8	3.5

### ● Usage example



Individual Sales → P. xxxxx	Cleanroom Wash & Packaging → P. xxxxx	Screw Length Adjustment → P. xxxxx	Vibration Resistant → P. xxxxx	Modification process for captive use → P. xxxxx
1 piece in 1 pack	S.S. only/ Add'l charge	Not Available	Not Available	Not Available