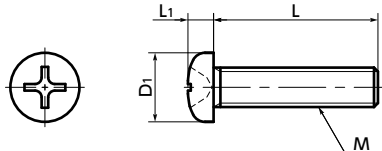


SPA-P Plastic Screw - Cross Recessed Pan Head Machine Screws - RENY



High strength



● Application

Electrical and electronic equipment / Insulation and dew condensation prevention for refrigerators and freezers / Aquatic applications / Electrochemical plating / Lightweight applications in automobiles, aircrafts, and spacecrafts

● Material/Finish



	SPA-P
Main body	RENY*1 (50% Glass Fiber Reinforced Polyamide MXD6) (Ivory)
Heat Resistance Temperature*2	105°C

- *1: RENY is a registered trademark of Mitsubishi Engineering-Plastics Corporation.
- *2: This is the value for the plastic material. The maximum operating temperature of the product changes with performance conditions such as tightening torque.

- RENY is a thermoplastic super-engineering plastic with excellent tensile and flexural strength.
- Screws have excellent fatigue resistance, creep resistance, and thermal insulation.
- While it is nearly as strong as metal, its weight is approximately 1/5 of iron.
- The properties and precautions of plastic screws
➔ P.xxxx

Unit : mm

Part Number	M (Coarse)		L 2										D1	L1	Cross-recessed Socket Number	Tension*1 Rupture Load (N)	Torsional*1 Torque (N·m)	Mass (g)	Qty per pack		
	Nominal of Thread 1	Pitch	4	5	6	8	10	12	15	20	25	30									
SPA-M1.7-P	M1.7	0.35	4												2.5	0.5	0	98	0.041	0.011	50
SPA-M2-P	M2	0.4	3	4	5	6	8	10	12						3.5	1.3	1	350	0.101	0.028 - 0.061	50
SPA-M2.6-P	M2.6	0.45	4	5	6	8	10	12							4.5	1.7	1	611	0.22	0.07 - 0.11	50
SPA-M3-P	M3	0.5	4	5	6	8	10	12	15	20	25	30			5.5	2	2	853	0.36	0.093 - 0.35	50
SPA-M4-P	M4	0.7		5	6	8	10	12	15	20	25	30			7	2.6	2	1499	0.85	0.2 - 0.68	50
SPA-M5-P	M5	0.8				8	10	12	15	20	25	30	35		9	3.3	2	2407	1.65	0.47 - 1.3	20
SPA-M6-P	M6	1					10	12	15	20	25	30	35	40	10.5	3.9	3	3106	2.74	0.83 - 2.1	20
SPA-M8-P	M8	1.25						12	15	20	25	30	35		14	5.2	3	5335	6.22	2.3 - 3.8	10

- *1: Values in chart are for reference only. They are not guaranteed values. The recommendation torque is 50% of the torsional torque.
- When purchasing less volume than one full bag, a separate handling fee is charged. For details, see the Sold Separately Service.

● Part number specification

SPA - M5 - 20 - P

Product Code	1	2	Product Code
--------------	------------------------------------	------------------------------------	--------------

Individual Sales ➔ P.xxxx	Cleanroom Wash & Packaging ➔ P.xxxx	Screw Length Adjustment ➔ P.xxxx	Vibration Resistant ➔ P.xxxx	Modification process for captive use ➔ P.xxxx
Available / Add'l charge	Available / Add'l charge	Not Available	Not Available	Not Available