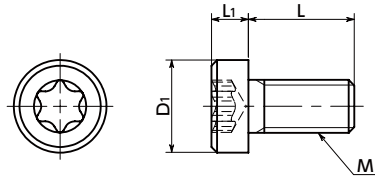


# SPE-LH Plastic Screws - Hexalobular Socket Head Cap Screw with Low Head - PEEK

Protrusion 
 Heat-resistance 
 Chemical-proof



## Material/Finish



	<b>SPE-LH</b>
Main Body	PEEK (Polyether Ether Ketone) (Light Brown)
Heat Resistance Temperature*1	260°C

\*1: This is the value for the resin material. The operating temperature of the product changes with performance conditions such as tightening torque.

## Application

FPD production equipment / Semiconductor devices / Printed circuit board etching devices / Metallic surface treatment equipment and facilities / Chemical plants / Transformers / Electrical and electronic equipment / Hot water pumps / Chemical pumps

## ⚠️ Precautions for Use

Because a cumulative pitch difference is created when PEEK screws are manufactured, use these screws with nuts. If a nut is not used, use a 20 mm or less fit with female thread.

- PEEK low profile cap screw.
- PEEK is a thermoplastic super engineering plastic superior in physical and chemical properties.
- Excellent chemical resistance. It remains almost unaffected by chemicals other than concentrated sulfuric acid, concentrated nitric acid, and concentrated hydrofluoric acid.
- With excellent heat resistance and water resistance, it retains strength at high temperatures.
- It features outstanding resistance to wear, shock, and fatigue.
- It also has high flame retardance which clears the UL 94 V-0 standard.
- The recess has a hexalobular\*1 shape that can withstand high tightening torque.
- Install and remove with **SKX** Dedicated Wrench or **SKXB** Dedicated Bit and **SRD** Dedicated Magnetic Screwdriver together.
- Use the **SKX-N** hexalobular wrench for extremely limited access spaces for mounting and removing in tight spaces.
- For the properties and precautions of plastic screws, please refer to "Properties of Plastic Screws".

\*1: The hexalobular shape is prescribed by JIS B 1015: 2008(ISO 10664: 2005)"Hexalobular internal driving feature for bolts and screws".

Part Number	M (Coarse)		L								D1	L1	Applicable Wrench	Hexalobular Socket No.	Tension Rupture Load*1 (N)	Torsional Torque*1 (N·m)	Mass (g)	per Pack Qty	
	Nominal of Thread	Pitch	6	8	10	12	16	20	25	30									40
<b>SPE-M3-LH</b>	M3	0.5	6	8	10	12	16	20				5.5	2.4	SKX-10	10	406	0.21	0.11-0.2	20
<b>SPE-M4-LH</b>	M4	0.7	6	8	10	12	16	20	25			7	3.1	SKX-20	20	760	0.5	0.2-0.41	20
<b>SPE-M5-LH</b>	M5	0.8	6	8	10	12	16	20	25	30		8.5	3.65	SKX-25	25	1277	0.95	0.34-0.8	20
<b>SPE-M6-LH</b>	M6	1	10	12	16	20	25	30	40	10		4.4	SKX-30	30	1747	1.65	0.63-1.45	10	

Unit : mm

- \*1: Values in chart are for reference only. They are not guaranteed values. The recommended tightening torque is 50% of the torsional torque.
- When purchasing less volume than one full bag, a separate handling fee is charged. For details, see the Sold Separately Service.

Individual Sales	Cleanroom Wash & Packaging	Screw Length Adjustment	Vibration Resistant	Modification process for captive use
Available / Add'l charge	Available / Add'l charge	Available / Add'l charge	Not Available	Available / Add'l charge

## Related Products

PEEK hex nuts and washers **SPE-N** **SPE-W** are available.



**SKX** Hexalobular Wrench



**SKX-N** Hexalobular Wrench for Extremely Limited Access Spaces



**SKXB** Hexalobular Short Bit



**SRD** Magnet Screwdriver



## Part number specification

**SPE-M5-30-LH**

Product Symbol **1** **2** Product Symbol