

● Material/Finish



	KUMS-SC
Main Body	SUS304

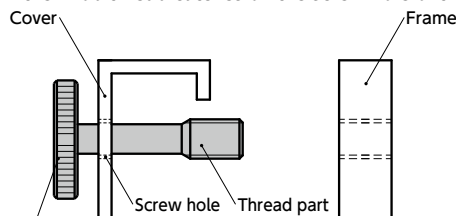
⚠ Precautions for Use

Screw hole inner diameter on the cover side shall be at least d_1 .

The cover thickness should be 0.8 mm or above.

- Captive type knurled knob. Prevents fall-off and loss of the knob.
- Foreign matter entry countermeasures in food processing machinery and so on, as well as CE marking support. (➡ P.xxxx)
- Made of SUS304. For applications including food processing machinery, packaging machinery, etc., where corrosion resistance is called for.
- Flat type.
- Installation example

Make a screw hole in the cover, then pass the knob thread through it. Even when the screw is removed from the frame, the knob does not fall out from the cover because the knob thread catches on the screw hole of the cover.



KUMS-SC Captive knurled knob

Unit : mm

Dimensions

Part Number	D ❶	M (Coarse)		Lm	H	d ₁	Mass (g)
		Nominal of Thread ❷	Pitch				
KUMS-12-M3-SC	12	M3	0.5	4	2.5	2.2	2 - 3
KUMS-16-M4-SC	16	M4	0.7	5	3.5	3	6
KUMS-20-M5-SC	20	M5	0.8	6	4	3.9	11 - 12
KUMS-24-M6-SC	24	M6	1	8	5	4.6	20 - 21
KUMS-30-M8-SC	30	M8	1.25	10	6	6.3	36 - 40
KUMS-36-M10-SC	36	M10	1.5	12	8	8	69 - 77

Part Number	L (mm) ❸					
	10	16	20	25	30	40
KUMS-12-M3-SC	●	●				
KUMS-16-M4-SC	●	●				
KUMS-20-M5-SC	●	●	●			
KUMS-24-M6-SC		●	●	●	●	
KUMS-30-M8-SC		●	●	●	●	
KUMS-36-M10-SC			●	●	●	●

● Part number specification

KUMS-24-M6-20-SC

Product Symbol ❶ ❷ ❸ Captive

For ❸ screw length L, select from the sizes marked with ● in the table.

Cleanroom Wash & Packaging ➡ P.xxxx	Screw Combination ➡ P.xxxx	Screw Length Adjustment ➡ P.xxxx	Vibration Resistant ➡ P.xxxx	Laser Marking ➡ P.xxxx
Please feel free to contact us	Not Available	Not Available	Not Available	Available / Add'l charge