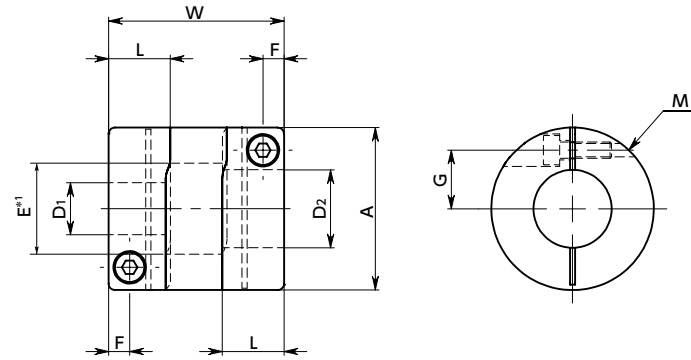


XGS2-C Flexible Couplings - High - gain Rubber Type - Short Type Patented

Zero Backlash High gain supported High torque High Rigidity Vibration absorption Electrical Insulation

XGS2-C



* 1: $E = D_2 + 0.5 (D_2 < 5)$
 $E = D_2 + 1 (D_2 \geq 5)$

Dimensions

Unit : mm

Part Number	A	L	W	F	G	M	Screw Tightening Torque (N·m)
XGS2-15C	15	6.5	18	2.15	5	M1.6	0.25
XGS2-19C	19	7.7	20	2.65	6.5	M2	0.5
XGS2-25C	25	9.5	27	3.25	9	M2.5	1
XGS2-27C	27	9.5	27	3.25	10	M2.5	1
XGS2-30C	30	11	30	4	11	M3	1.5
XGS2-34C	34	12	35	4	12.25	M3	1.5
XGS2-39C	39	15.5	40	4.5	14.5	M4	2.5

Part Number	Standard Bore Diameter D1-D2									
	3 - 5	3 - 6	4 - 4	4 - 5	4 - 6	4.5 - 5	5 - 5	5 - 6	6 - 6	
XGS2-15C	3 - 5	3 - 6	4 - 4	4 - 5	4 - 6	4.5 - 5	5 - 5	5 - 6	6 - 6	
XGS2-19C	4 - 5	5 - 5	5 - 6	5 - 7	5 - 8	6 - 6	6 - 6.35	6 - 7	6 - 8	6.35 - 8
XGS2-25C	5 - 6	5 - 8	6 - 6	6 - 8	6 - 10	6 - 11	6 - 12	6.35 - 8	6.35 - 10	8 - 8
XGS2-27C	5 - 6	5 - 8	5 - 14	6 - 6	6 - 8	6 - 10	6 - 11	6 - 12	6 - 14	8 - 8
XGS2-30C	8 - 8	8 - 10	8 - 11	8 - 12	8 - 14	8 - 15	10 - 10	10 - 11	10 - 12	10 - 14
XGS2-34C	8 - 8	8 - 10	8 - 11	8 - 12	8 - 14	8 - 15	10 - 10	10 - 11	10 - 12	10 - 14
XGS2-39C	10 - 10	10 - 12	10 - 14	10 - 15	10 - 16	12 - 12	12 - 14	12 - 15	12 - 16	12 - 19
	12 - 20	14 - 14	14 - 15	14 - 16	15 - 15	15 - 16	15 - 19	16 - 16	17 - 17	20 - 20

- All products are provided with hex socket head cap screw.
- Recommended tolerance for shaft diameters is h6 and h7.
- In case of mounting on D-cut shaft, be careful about the position of the D-cut surface of the shaft.
- For the shaft insertion amount to the coupling, see Mounting/maintenance.

Performance

Part Number	Max. Bore Diameter (mm)	Keyway Additional Modification Max. Bore Diameter (mm)	Rated *1 Torque (N·m)	Max. Rotational Frequency (min ⁻¹)	Moment*2 of Inertia (kg·m ²)	Static Torsional Stiffness (N·m/rad)	Max. Lateral Misalignment (mm)	Max. Angular Misalignment (°)	Max. Axial Misalignment (mm)	Mass *2 (g)
XGS2-15C	6	-	0.5	42000	2.1×10 ⁻⁷	64	0.15	1.5	±0.2	7
XGS2-19C	8	6	0.8	33000	5.9×10 ⁻⁷	170	0.15	1.5	±0.2	12
XGS2-25C	12	9	2.3	25000	2.4×10 ⁻⁶	290	0.15	1.5	±0.2	24
XGS2-27C	14	10	2.3	23000	3.2×10 ⁻⁶	290	0.15	1.5	±0.2	28
XGS2-30C	15	11	3.3	21000	5.2×10 ⁻⁶	430	0.2	1.5	±0.3	38
XGS2-34C	16	12	5.5	18000	1.1×10 ⁻⁵	800	0.2	1.5	±0.3	61
XGS2-39C	20	15	7	16000	2.1×10 ⁻⁵	930	0.2	1.5	±0.3	90

*1 : Correction of rated torque due to load fluctuation is not required. If ambient temperature exceeds 30°C, be sure to correct the rated torque with temperature correction factor shown in the following table.

The allowable operating temperature of XGS2-C is -10°C to 120°C.

※ The shaft's slip torque may be smaller than the coupling's rated torque depending on the shaft bore. → P.xxxx

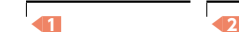
*2 : These are values with max. bore diameter.

• Ambient Temperature / Temperature Correction Factor

Ambient Temperature	Temperature Correction Factor
-10°C to 30°C	1.00
30°C to 40°C	0.80
40°C to 60°C	0.70
60°C to 120°C	0.55

• Part number specification

XGS2-34C-11-12



Additional Keyway at Shaft Hole → P.xxxx Cleanroom Wash & Packaging → P.xxxx Change to Stainless Steel Screw → P.xxxx Available / Add'l charge Please combine with Stainless Steel Screw Alteration Service Available / Add'l charge