

MDW-C Flexible Couplings - Disk Type

Zero Backlash

Structure

Clamping Type



Applicable motors

	MDW-C
Servomotor	○
Stepping Motor	○
General-purpose Motor	●

○: Excellent ●: Available

Property

	MDW-C
Zero Backlash	○
Allowable Misalignment	○

○: Excellent ○: Very good

- This is a disk type flexible coupling.
- The stainless steel disk allows eccentricity, and angular misalignment, and end-play.

Application

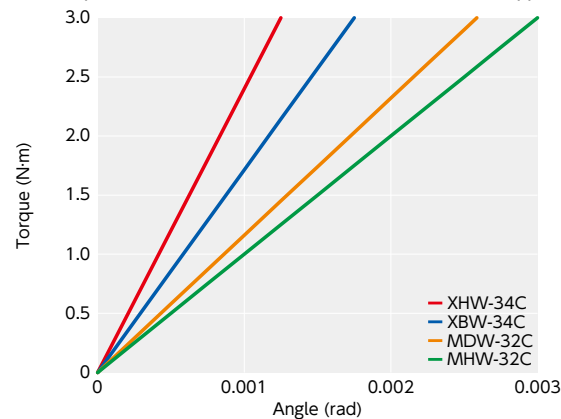
Actuator / XY stage

Material/Finish

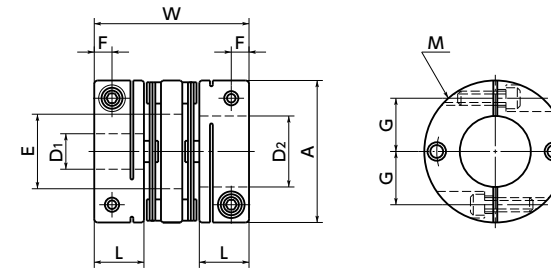


	MDW-C
Hub	A2017 Anodized
Spacer	A2017 Anodized
Disk	SUS304
Pin	SUS303
Collar	SUS303
Hex Socket Head Cap Screw	SCM435 Ferrosferic Oxide Film (Black)

Comparison of static torsional stiffness (Disk Type)



MDW-C



Dimensions

Unit : mm

Part Number	A	L	W	E	F	G	M	Screw Tightening Torque (N·m)
MDW-19C	19	8	27	8.5	2.5	6.5	M2	0.5
MDW-25C	25	10	31	12.5	3.5	9	M2.5	1
MDW-32C	32	12	40	16	4	11	M3	1.5
MDW-40C	40	14	44	21	5	15	M4	2.5
MDW-50C	50	18	57	26	6	18	M5	7
MDW-63C	63	20	61	35	7	24	M6	12

Part Number	Standard Bore Diameter																							
	D1/D2		4	5	6	7	8	6.35	9	10	11	12	14	15	16	17	18	19	20	22	24	25	28	30
MDW-19C	●	●	●	●	●																			
MDW-25C			●		●	●	●																	
MDW-32C					●				●	●	●	●	●											
MDW-40C						●			●	●	●	●	●	●	●	●	●	●	●	●	●	●	●	●
MDW-50C												●	●	●	●	●	●	●	●	●	●	●	●	●
MDW-63C													●	●	●	●	●	●	●	●	●	●	●	●

- All products are provided with hex socket head cap screw.
- Recommended tolerance for shaft diameters is h6 and h7.
- In case of mounting on D-cut shaft, be careful about the position of the D-cut surface of the shaft.
- For the shaft insertion amount to the coupling, see Mounting/maintenance.

Performance

Part Number	Max. Bore Diameter (mm)	Rated *1 Torque (N·m)	Max. Rotational Frequency (min ⁻¹)	Moment *2 of Inertia (kg·m ²)	Static Torsional Stiffness (N·m/rad)	Max. Lateral Misalignment (mm)	Max. Angular Misalignment (°)	Max. Axial Misalignment (mm)	Mass *2 (g)
MDW-19C	8	0.7	33000	8.7×10 ⁻⁷	200	0.12	1.5	±0.5	18
MDW-25C	12	1	25000	2.7×10 ⁻⁶	450	0.12	1.5	±0.5	25
MDW-32C	15	2.5	19000	9.6×10 ⁻⁶	1100	0.15	1.5	±0.5	60
MDW-40C	20	3.5	15000	1.9×10 ⁻⁵	1400	0.15	1.5	±0.5	100
MDW-50C	25	9	12000	8.1×10 ⁻⁵	2200	0.15	1.5	±0.5	210
MDW-63C	30	12.5	10000	2.1×10 ⁻⁴	3000	0.15	1.5	±0.5	340

*1: Correction of rated torque due to load fluctuation is not required.

*2: These are values with max. bore diameter.

Related Products

The Double-Disk type Flexible Coupling [XHW-C] is compatible with the servomotor with 350% instantaneous max. torque is available.



Part number specification

MDW-25C-6-8

1

2