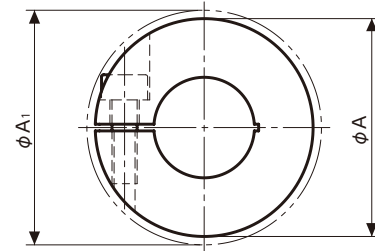


## Swing diameter

The Swing diameter is defined as the larger of the coupling's outer diameter ( $\phi A$ ) or the diameter including protruding bolt heads ( $\phi A_1$ ) while rotating. For applications in confined spaces, please refer to the swing diameter in the table below.

These values are reference dimensions and subject to manufacturing tolerances.

Design values should account for these fluctuations.



$\phi A$  : Coupling outer diameter  
 $\phi A_1$  : Bolt head protrusion diameter  
 Swing : The larger value of  $\phi A$  or  $\phi A_1$  diameter

## Swing diameter Part Number List

Bolt head protrusion diameter values that are larger than the coupling outer diameter are listed in red.

### High-gain Rubber Type

Unit: mm

Part number \ Outer diameter	15	19	25	27	30	34	39	44	56	68
XGT2-C	15	19	25	27	30	34	39	44	56	68
XGL2-C	15	19	25	-	30	34	39	-	-	-
XGS2-C	15	19	25	27	30	34	39	-	-	-

Part number \ Outer diameter	15	19	25	27	30	34	39	44	56
XGT-C	15	19	25	-	30	34	39	44	56
XGT-CS	15	19	25	27	30	34	39	44	56
XGL-C	15	19	25	-	30	34	39	-	-
XGS-C	15	19	25	-	30	34	39	-	-
XGS-CS	15	19	25	27	30	34	39	-	-

### Disk Type

Unit: mm

Part number \ Outer diameter	15	19	25	27	34	39	44	56	64	79	98
XHW-C	15	19.2	25	27	34	39	44	56	64	79	98
XHW-C-L	-	19.2	25	27	34	39	-	-	-	-	-
XHS-C	15	19.2	25	27	34	39	44	56	64	79	98

Part number \ Outer diameter	15	19	25	27	34	39	44	56	68	82	94	104
XBW-C	15.1	19.4	25	27	34	39	44	56	68	82	94	104
XBWS-C	15.1	19.4	25	27	34	39	44	56	-	-	-	-
XBS-C	15.1	19.4	25	27	34	39	44	56	68	82	94	104
XBSS-C	15.1	19.4	25	27	34	39	44	56	-	-	-	-

Part number \ Outer diameter	19	25	32	40	50	63
MDW-C	19	25	32	40.5	50	63
MDS-C	19	25	32	40.5	50	63

Part number \ Part A swing diameter	32	40	50	63	63※2
MHW-C※1	32	40	50	63	63
MHS-C※1	32	40	50	63	63

Part number \ Part C (hub) swing diameter	32	40	50	63	63※2
MHW-C※1	24.7	31.4	42.1	49.2	50.6
MHS-C※1	24.7	31.4	42.1	49.2	50.6

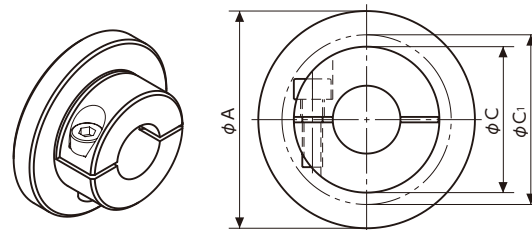
※2 For  $\phi 25$  shaft holes

### Vibration-Absorption Capable Type

Unit: mm

Part number \ Outer diameter	27	36	41	49
XGHW-C	27	36	41	49

※1 MHW MHS



$\phi A$  : Coupling outer diameter  
 $\phi C$  : Hub outer diameter  
 $\phi C_1$  : Hub bolt head protrusion diameter  
 Part A swing diameter : Coupling outer diameter  
 Hub swing diameter : The larger value of  $\phi C$  or  $\phi C_1$

### Slit Type

Unit: mm

Part number \ Outer diameter	16	19	24	29	34	39	44
MSX-C	16.1	19.2	24.9	29	34	39.2	44

Part number \ Outer diameter	12	16	20	25	32	40	50	63
MST-C	14.1	17.6	20.1	26	32.6	42.4	51.7	67
MSTS-C	14.1	17.6	20.1	26	32.6	42.4	51.7	67

Part number \ Outer diameter	12	16	20	25	32
MWS-C	14.1	17.6	20.1	26	32.6
MWSS-C	14.1	17.6	20.1	26	32.6

Part number \ Outer diameter	13	16	20	26	32
MSH-C	13.7	16	20.7	26	32

### Jaw Type

Unit: mm

Part number \ Outer diameter	14	20	25	30	40	55	65	80	95									
Bore	3-5	6-7	4-8	9.525-11	4-10	11-12.7	12.7-16	7.9375-20	22-25	9.525-28	30-32	12.7-32	34.925-38	19.05-42	45	25-48	50-55	
MJC-CS	15.1	14.9	20.2	21.2	26.9	26.4	31.9	30.5	41.4	43	55.3	55	67	65.2	80	80.8	95	97.6
MJC-CSK	-	-	-	-	26.9	26.4	31.9	30.5	41.4	43	55.3	55	67	65.2	80	80.8	95	97.6
MJS-CS	-	-	20.2	-	26.9	26.4	30.9	30.5	41.4	43	55.3	55	67	65.2	-	-	-	-
MJS-CSK	-	-	-	-	26.9	26.4	30.9	30.5	41.4	43	55.3	55	67	65.2	-	-	-	-

### Oldham Type

Unit: mm

Part number \ Outer diameter	12	15	17	20	26	30	34	38	45	55	68
MOR-C	14.2	17.4	19.7	24.1	27.6	33.3	35.8	42.5	45.7	55.1	71.3
MOR-CK	-	17.4	20.5	24.1	27.6	33.3	35.8	42.5	45.7	55.1	71.3

Part number \ Outer diameter	15	17	20	26	30	34	38	45	55	70
MOM-C	15.2	17.2	21.9	26.8	30.4	35.3	38.9	45.1	55	70
MOM-CK	15.2	17.2	21.9	26.8	30.4	35.3	38.9	45.1	55	70

Part number \ Outer diameter	16	20	25	32	40	50	63
MOL-C	17.6	20.1	26.3	33.6	40	50	63

Part number	12	17	23	28	33	41
MOC-C	14.2	17.4	24.1	27.6	33.3	42.5

Part number \ Outer diameter	12	16	20	25	32
MOS-C	14.2	17.6	20.1	26	34.9

### Rigid Type

Unit: mm

Part number \ Outer diameter	16	19	24	34	39
XRP-C	16	19.3	24.5	34	39

Part number \ Outer diameter	16	20	25	32	40	50	65
MRG-C	17.7	20.2	26	33.5	41.7	52.1	67.6
MRGS-C	17.7	20.2	26	33.5	41.7	52.1	67.6
MRG-W	17.7	20.2	26.2	33.2	41.7	52.1	67.6
MRGS-W	17.7	20.2	26.2	33.2	41.7	52.1	67.6

Part number \ Outer diameter	16	20	25	32
MLR-C	16	20	26.1	32
MLRS-C	16	20	26.1	32
MLR-V	16	20	26.1	32
MLRS-V	16	20	26.1	32

### Cross Joint Type

Unit: mm

Part number \ Outer diameter	12	20	25	30	35	40
XUT-C	15.9	20	25	30	35.8	40

### Cleanroom / Vacuum / Heat Resistant Type

Unit: mm

Part number \ Outer diameter	25	32	40	50	63
XSTS-C	26	32.6	42.4	51.7	67

Part number \ Outer diameter	25	32
XWSS-C	26	32.6

Part number \ Outer diameter	25	30	36
MSXP-C	25	30	36

Part number \ Outer diameter	19	26	32
MOHS-C	20.1	26	34.9

Part number \ Outer diameter	20	25	32
MOP-C	20.1	26	34.9

### Bellows Type

Unit: mm

Part number \ Outer diameter	12	16	20	25	32
MFBC	14.2	17.6	20.1	26	33.6
MFBS-C	14.3	17.7	20.2	26	33.5

Part number \ Outer diameter	19	27	32	40	
Bore	3-8	3-14	5-16	5-20	22-24
MBC-C	19	27	32	40.4	40