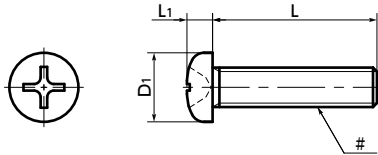


SPE-P(INCH) Plastic Screws - Cross Recessed Pan Head Machine Screws - PEEK - Inch Thread

Heat-resistance Chemical-proof



● Material/Finish



	SPE-P(INCH)
Main Body	PEEK / Light Brown
Heat Resistance Temperature*1	260°C

*1: This is the value for the resin material. The operating temperature of the product changes with performance conditions such as tightening torque.

⚠ Precautions for Use

Because a cumulative pitch difference is created when PEEK screws are manufactured, use these screws with nuts. If a nut is not used, use a 20 mm (approx. 0.79") or less fit with female thread.

- Inch screw type.
- PEEK is a thermoplastic super engineering plastic superior in physical and chemical properties.
- Excellent chemical resistance. It remains almost unaffected by chemicals other than concentrated sulfuric acid, concentrated nitric acid, and concentrated hydrofluoric acid.
- With excellent heat resistance and water resistance, it retains strength at high temperatures.
- It features outstanding resistance to wear, shock, and fatigue.
- It also has high flame retardance which clears the UL 94 V-0 standard.
- Plastic screw properties and precautions for use
➔ P.xxxx

● Application

FPD production equipment / Semiconductor devices / Printed circuit board etching devices / Metallic surface treatment equipment and facilities / Chemical plants / Transformers / Electrical and electronic equipment / Hot water pumps / Chemical pumps

Unit : inch

Part Number 1	#Nominal of Thread	L 2	D1	L1	Cross-recessed Socket Number	Tension*1 Rupture Load (N)	Torsional*1 Torque (N·m)	Mass (g)	Qty per Pack
SPE-#2-56-P	No.2-56UNC	3 / 16 1 / 4 5 / 16 3 / 8				0.167 0.058 1	181 0.1	0.036 - 0.048	10
SPE-#4-40-P	No.4-40UNC	1 / 4 5 / 16 3 / 8 1 / 2 5 / 8 3 / 4 7 / 8 1				0.219 0.08 1	306 0.19	0.083 - 0.156	10
SPE-#6-32-P	No.6-32UNC	1 / 4 5 / 16 3 / 8 1 / 2 5 / 8 3 / 4 7 / 8 1				0.27 0.097 2	459 0.33	0.11 - 0.30	10
SPE-#8-32-P	No.8-32UNC	1 / 4 5 / 16 3 / 8 1 / 2 5 / 8 3 / 4 7 / 8 1				0.322 0.115 2	746 0.61	0.16 - 0.35	10
SPE-#10-24-P	No.10-24UNC	3 / 8 1 / 2 5 / 8 3 / 4 7 / 8 1				0.373 0.133 2	919 0.84	0.47 - 0.65	10
SPE-#10-32-P	No.10-32UNF	3 / 8 1 / 2 5 / 8 3 / 4 7 / 8 1				0.373 0.133 2	1090 0.95	0.59 - 0.77	10
SPE-1 / 4-20	1/4-20UNC	3 / 8 1 / 2 5 / 8 3 / 4 7 / 8 1	1 - 1/4	0.492	0.175 3	1742 2.04	1.4 - 1.9	10	

*1: Values in chart are for reference only. They are not guaranteed values. The recommended tightening torque is 50% of the torsional torque.

● When purchasing less volume than one full bag, a separate handling fee is charged. For details, see the Sold Separately Service.

● Related Products

PEEK hex nuts (inch thread) **SPE-N(INCH)** are available.



● Part number specification



Individual Sales ➔ P.xxxx	Cleanroom Wash & Packaging ➔ P.xxxx	Screw Length Adjustment ➔ P.xxxx	Vibration Resistant ➔ P.xxxx	Modification process for captive use ➔ P.xxxx
Available / Add'l charge	Available / Add'l charge	Available / Add'l charge	Not Available	Please feel free to contact us