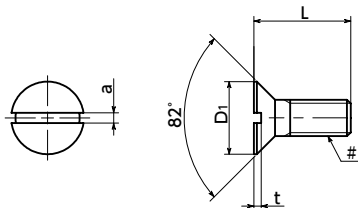


# SPE-FS(INCH)

Plastic Screws - Slotted Flat Head Machine Screws - PEEK - Inch Thread



Heat-resistance Chemical-proof



## ● Application

FPD production equipment / Semiconductor devices / Printed circuit board etching devices / Metallic surface treatment equipment and facilities / Chemical plants / Transformers / Electrical and electronic equipment / Hot water pumps / Chemical pumps

## ● Material/Finish



SPE-FS(INCH)	
Main Body	PEEK / Light Brown
Heat Resistance Temperature*1	260°C

\*1: This is the value for the resin material. The operating temperature of the product changes with performance conditions such as tightening torque.

## ⚠ Precautions for Use

Because a cumulative pitch difference is created when PEEK screws are manufactured, use these screws with nuts. If a nut is not used, use a 20 mm (approx. 0.79") or less fit with female thread.

- Inch screw type.
- PEEK is a thermoplastic super engineering plastic superior in physical and chemical properties.
- Excellent chemical resistance. It remains almost unaffected by chemicals other than concentrated sulfuric acid, concentrated nitric acid, and concentrated hydrofluoric acid.
- With excellent heat resistance and water resistance, it retains strength at high temperatures.
- It features outstanding resistance to wear, shock, and fatigue.
- It also has high flame retardance which clears the UL 94 V-0 standard.
- Plastic screw properties and precautions for use  
➔ P.xxxx

Unit : inch

Part Number	#Nominal of Thread	L	D1	a	t	Tension Rupture Load (N)	Torsional*1 Torque (N·m)	Mass (g)	Qty per Pack
<b>SPE-#4-40-FS</b>	No.4-40UNC	1 / 4 5 / 16 3 / 8 1 / 2 5 / 8 3 / 4 7 / 8 1	0.212	0.039	0.024	306	0.19	0.05 - 0.11	10
<b>SPE-#6-32-FS</b>	No.6-32UNC	1 / 4 5 / 16 3 / 8 1 / 2 5 / 8 3 / 4 7 / 8 1	0.262	0.048	0.030	459	0.33	0.12 - 0.24	10
<b>SPE-#8-32-FS</b>	No.8-32UNC	1 / 4 5 / 16 3 / 8 1 / 2 5 / 8 3 / 4 7 / 8 1	0.312	0.054	0.036	746	0.61	0.22 - 0.50	10
<b>SPE-#10-32-FS</b>	No.10-32UNF	3 / 8 1 / 2 5 / 8 3 / 4 7 / 8 1	0.362	0.06	0.042	1090	0.95	0.44 - 0.69	10

\*1: Values in chart are for reference only. They are not guaranteed values. The recommended tightening torque is 50% of the torsional torque.

● When purchasing less volume than one full bag, a separate handling fee is charged. For details, see the Sold Separately Service.

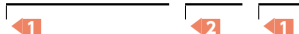
## ● Related Products

PEEK hex nuts (inch thread)  
**SPE-N(INCH)** are available.



## ● Part number specification

**SPE-#4-40-1/4-FS**



Individual Sales ➔ P.xxxx	Cleanroom Wash & Packaging ➔ P.xxxx	Screw Length Adjustment ➔ P.xxxx	Vibration Resistant ➔ P.xxxx	Modification process for captive use ➔ P.xxxx
Available / Add'l charge	Available / Add'l charge	Available / Add'l charge	Not Available	Not Available