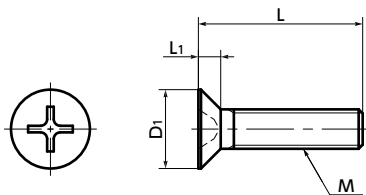


SPE-F Plastic Screw - Cross Recessed Flat Head Machine Screws - PEEK



Heat-resistance Chemical-proof



● Material/Finish



	SPE-F
Main body	PEEK (Polyether Ether Ketone) (Light Brown)
Heat Resistance Temperature*1	260°C

*1: This is the value for the plastic material. The maximum operating temperature of the product changes with performance conditions such as tightening torque.

⚠ Precautions for Use

Because a cumulative pitch difference is created when PEEK screws are manufactured, use these screws with nuts. If a nut is not used, use a 20 mm or less fit with female thread.

- PEEK is a thermoplastic super-engineering plastic with excellent physical and chemical properties.
- These screws have excellent chemical resistance. They are mostly unaffected by chemicals excluding concentrate sulfuric acid, concentrate nitric acid, and concentrate hydrofluoric acid.
- These screws have excellent heat resistance, water resistance, and high heat resistance strength.
- These screws have excellent abrasion, shock, and fatigue resistance.
- They have high incombustibility that meets V-0 of UL 94.
- The properties and precautions of plastic screws
➔ P.xxxx
- Application

FPD production equipment / Semiconductor devices / Printed circuit board etching devices / Metallic surface treatment equipment and facilities / Chemical plants / Transformers / Electrical and electronic equipment / Hot water pumps / Chemical pumps

Unit : mm

Part Number	M (Coarse)		L 2										D1	L1	Cross-recessed Socket Number	Tension*1 Rupture Load (N)	Torsional*1 Torque (N·m)	Mass (g)	Qty per pack	
	Nominal of Thread 1	Pitch	4	5	6	8	10	12	15	16	20	25								30
SPE-M2-F	M2	0.4	4	5	6	8	10							4	1.2	1	165	0.071	0.02 -0.039	20
SPE-M2.6-F	M2.6	0.45	4		6	8	10							5.2	1.5	1	291	0.15	0.045 -0.0716	20
SPE-M3-F	M3	0.5		5	6	8	10	12	15	16	20	25		6	1.75	2	405	0.21	0.057 -0.22	20
SPE-M4-F	M4	0.7			6	8	10	12	15	16	20	25	30	8	2.3	2	738	0.47	0.17 -0.47	20
SPE-M5-F	M5	0.8				8	10	12	15		20	25	30	10	2.8	2	1234	0.96	0.37 -0.8	10
SPE-M6-F	M6	1					10	12	15		20	25	30	12	3.4	3	1749	1.64	0.41 -1.2	10
SPE-M8-F	M8	1.25							15		20	25	30	16	4.4	3	3261	3.68	1.3 -2.4	5

*1: Values in chart are for reference only. They are not guaranteed values. The recommendation torque is 50% of the torsional torque.
● When purchasing less volume than one full bag, a separate handling fee is charged. For details, see the Sold Separately Service.

● Related Products

SPE-N Plastic Hexagon Nut (PEEK) is available.
➔ P.xxxx



● Part number specification

SPE-M5-20-F

Product Code	1	2	Product Code
--------------	----------	----------	--------------

1 Individual Sales ➔ P.xxxx	2 Cleanroom Wash & Packaging ➔ P.xxxx	3 Screw Length Adjustment ➔ P.xxxx	4 Vibration Resistant ➔ P.xxxx	5 Modification process for captive use ➔ P.xxxx
Available / Add'l charge	Available / Add'l charge	Available / Add'l charge	Not Available	Not Available