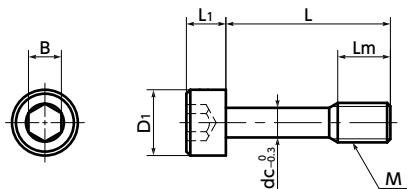




SSC Socket Head Cap Captive Screws

SUS Stainless steel



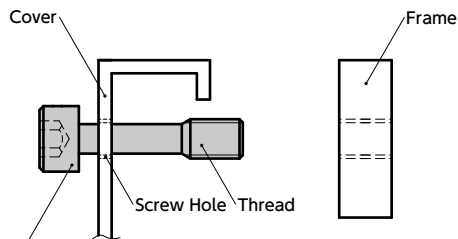
● Material/Finish



	SSC
Main Body	SUSXM7 (Equivalent to SUS304)
Strength Class	A2 - 70

● Installation example

Process a screw hole in the cover, then pass **SSC** thread through it. Even when the screw is removed from the frame, **SSC** does not fall out from the cover because **SSC** thread catches on the screw hole of the cover.



SSC Socket Head Cap Captive Screw

- The shape of the screws prevent them from falling out and loss. For fixing protective and inspection covers that are frequently installed and removed.
- Socket head cap screw type.
- These items comply with CE marking requirements.
- Also, captive screws with special specifications for dimensions, shapes, materials, and surface treatments are available.



● Application

For fixing protective covers and maintenance covers
 CE Marking compatible
 Machine tools / Food machinery / Electrical and electronic equipment

⚠ Precautions for Use

- Screw hole inner diameter on the cover side shall be at least the dc dimension.
- The cover thickness should be 0.8 mm or above.

Unit : mm

Part Number 1	M (Coarse)		L 2	Lm	D1	L1	B	dc	Mass (g)
	Nominal of Thread	Pitch							
SSC-M3	M3	0.5	4 6 8 10 12 16	2 (L≤6) 4 (L>6)	5.5	3	2.5	2.2	0.6 - 1.2
SSC-M4	M4	0.7	6 8 10 12 16 20	3 (L≤8) 5 (L>8)	7	4	3	3	1.4 - 2.7
SSC-M5	M5	0.8	8 10 12 16 20 25	4 (L≤10) 6 (L>10)	8.5	5	4	3.9	2.5 - 4.8
SSC-M6	M6	1	8 10 12 16 20 25 30	4 (L≤10) 8 (L>10)	10	6	5	4.5	4.4 - 8.3
SSC-M8	M8	1.25	8 10 12 16 20 25 30 35 40	5 (L≤12) 10 (L>12)	13	8	6	6.3	9 - 21

● Part Number Specification

SSC-M6-12



1 Individual Sales 1 piece in 1 pack	2 Cleanroom Wash & Packaging Available / Add'l charge	3 Screw Length Adjustment Not Available	4 Vibration Resistant Not Available	5 Modification process for captive use with Captive Processing
--	---	---	---	--