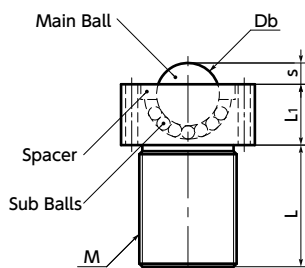
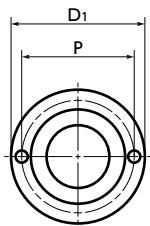
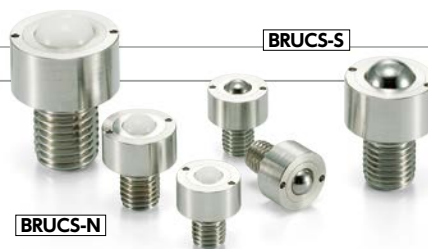


BRUCS Ball Rollers - Cap Screw Type

SUS Stainless steel



- These are cap screw type ball rollers with stainless steel bodies for upward applications.
- Install and remove by using **BRW** Specialty Wrench.
- Because a wrench spacer is not required, they can be attached in proximity.
- Application

FPD production equipment, semiconductor devices, food production lines, and packaging lines

● Material/Finish



	BRUCS-S	BRUCS-N
Main Body	SUS304	SUS304
Main Ball	SUS440C (Hardness 55HRC or Higher)	Polyacetal/White
Sub Ball	SUS440C (Hardness 55HRC or Higher)	SUS440C (Hardness 55HRC or Higher)
Spacer	SUS304	SUS304



Precautions for Use
 These ball rollers are for upward applications only. If it is used for downward and sideward applications, the product may be damaged or the ball may malfunction.

BRUCS-S | BRUCS-N

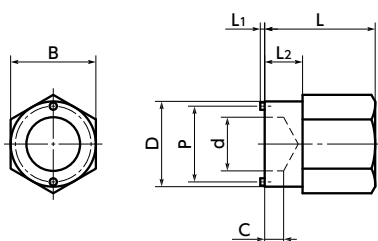
Unit : mm

BRUCS-S Main Ball: Stainless Steel		BRUCS-N Main Ball: Polyacetal		Common Dimensions									
Part Number	Withstand Load (N)	Part Number	Withstand Load (N)	M (Coarse)		L	L1	s	D1	Db	P	Applicable Wrench	Mass (g)
				Nominal of Thread	Pitch								
BRUCS-10-S	55	BRUCS-10-N	34	M10	1.5	12	10	2.5	18.5	8.73	15.4	BRW-10	26
BRUCS-12-S	62	BRUCS-12-N	55	M12	1.75	15	11	3.5	22	10.32	18.5	BRW-12	42
BRUCS-16-S	343	BRUCS-16-N	69	M16	2	20	15	5.3	27	15.88	24	BRW-16	92
BRUCS-20-S	412	BRUCS-20-N	82	M20	2.5	25	18	6.3	33	19.05	29.6	BRW-20	170

● Dedicated wrench

Unit : mm

Part Number	L	L1	L2	B	C	D	d	P	Mass (g)
BRW-10	25	1.4	8	19	3	18.5	10	15.4	55
BRW-12	30	1.4	10	24	4	22	12	18.5	102
BRW-16	35	1.4	12	27	6	27	17	24	153
BRW-20	40	1.4	14	30	7	33	20	29.6	220



● Part number specification

BRUCS-12-N

Product Code: M Main Ball: "S" or "N"

Individual Sales → P.xxxx	Cleanroom Wash & Packaging → P.xxxx	Screw Length Adjustment → P.xxxx	Vibration Resistant → P.xxxx
1 piece in 1 pack	Please feel free to contact us	Not Available	Not Available